

STRIKELINES.com

Custom Fishing Charts

“Get ready to stop fishing and start catching!”

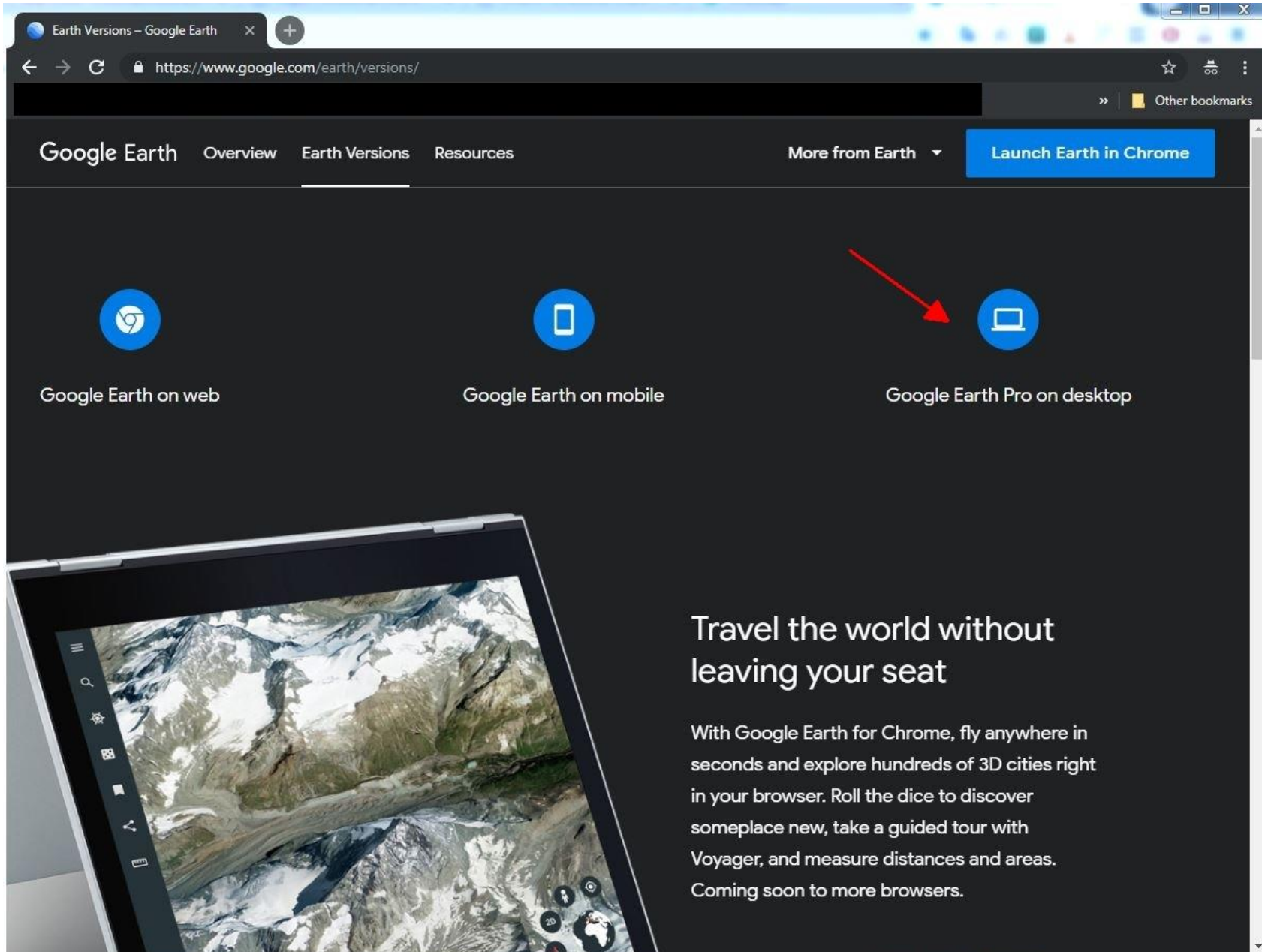
Thank you for your purchase of a StrikeLines fishing chart for Google Earth. You’re going to love it. We spend our days dragging sonar and processing data so that you can get busy catching more fish. We believe these are the best charts ever created for fishermen. Feel free to drop us a line and let us know what you think. Fish pictures are always appreciated!!

Travis Griggs

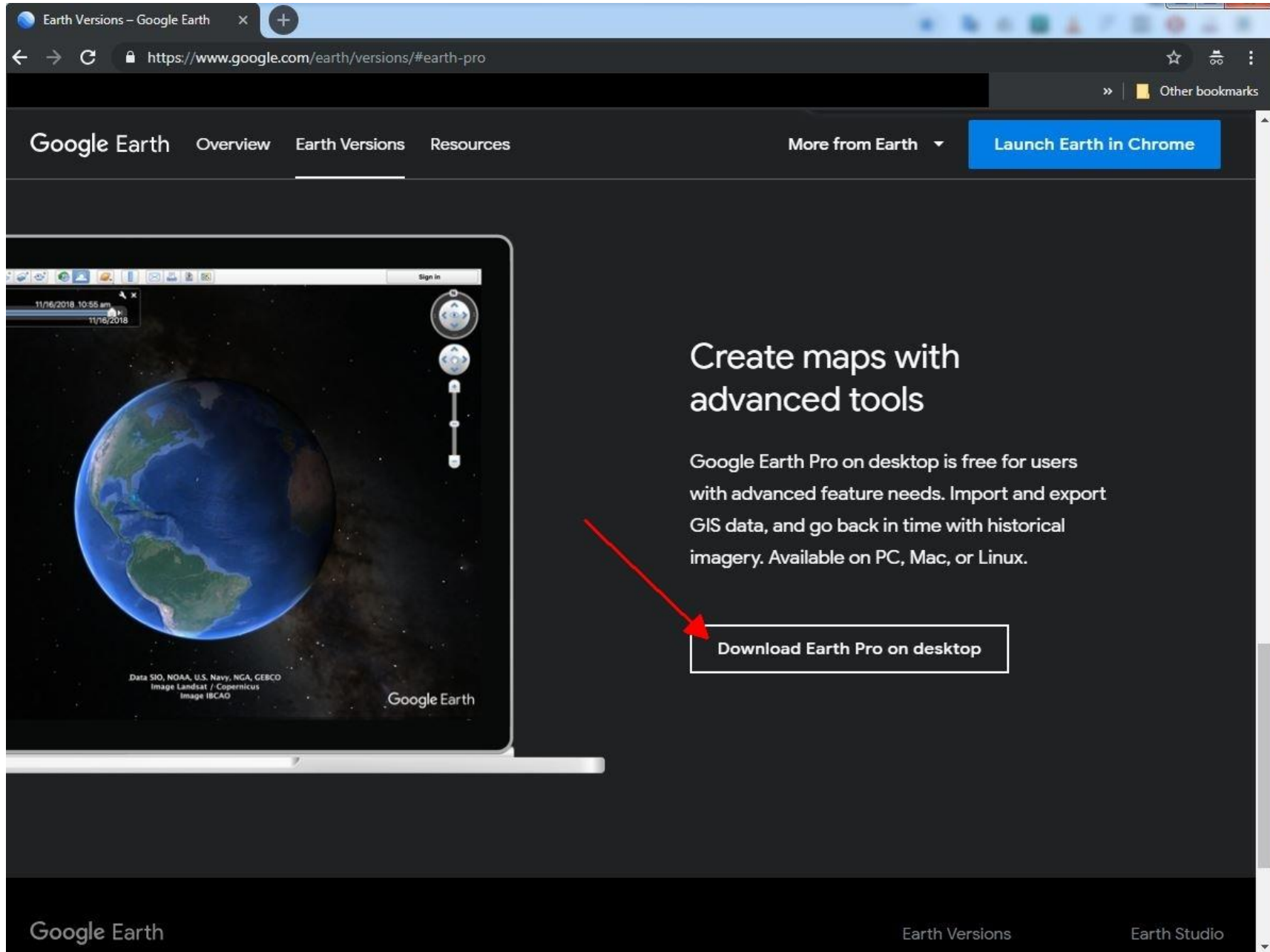
--StrikeLines Founder

StrikeLines.com
34 Audusson Ave
Pensacola, FL 32507
info@strikelines.com
850.710.0242

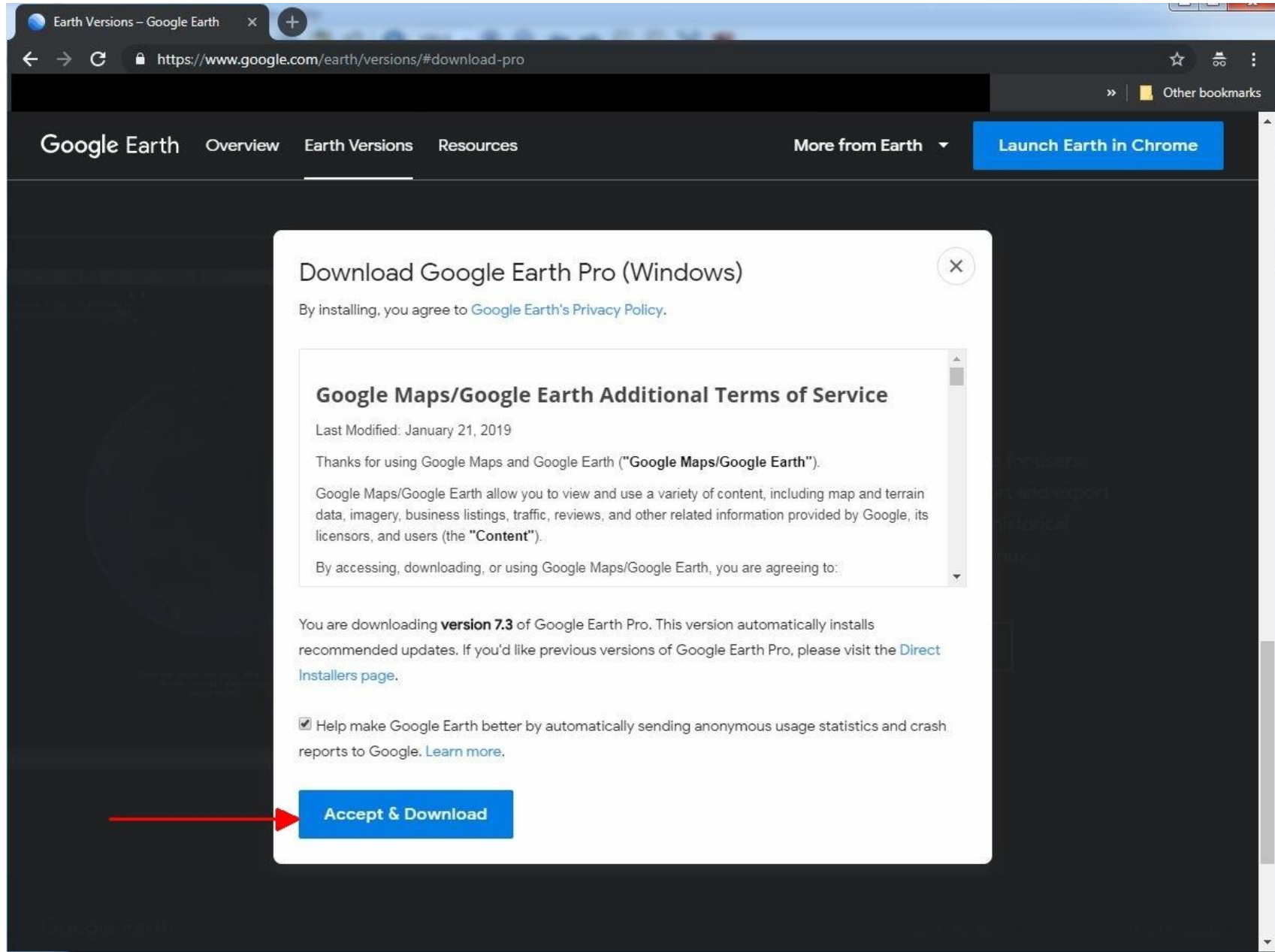
1. Open your web browser and go to [Google.com/earth/versions](https://www.google.com/earth/versions/). Click on Google Earth Pro on Desktop.



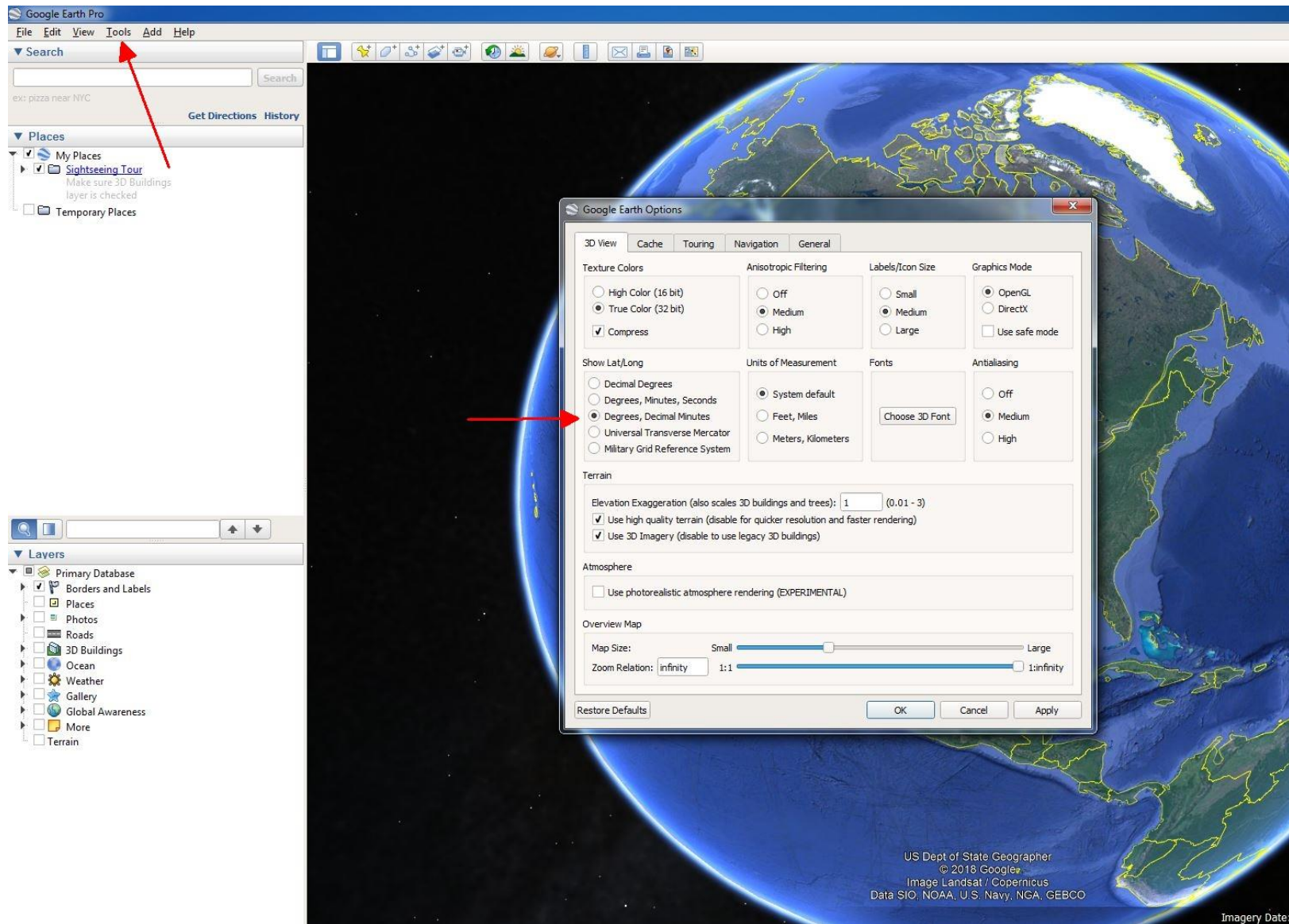
2. Click Download Earth Pro on desktop.



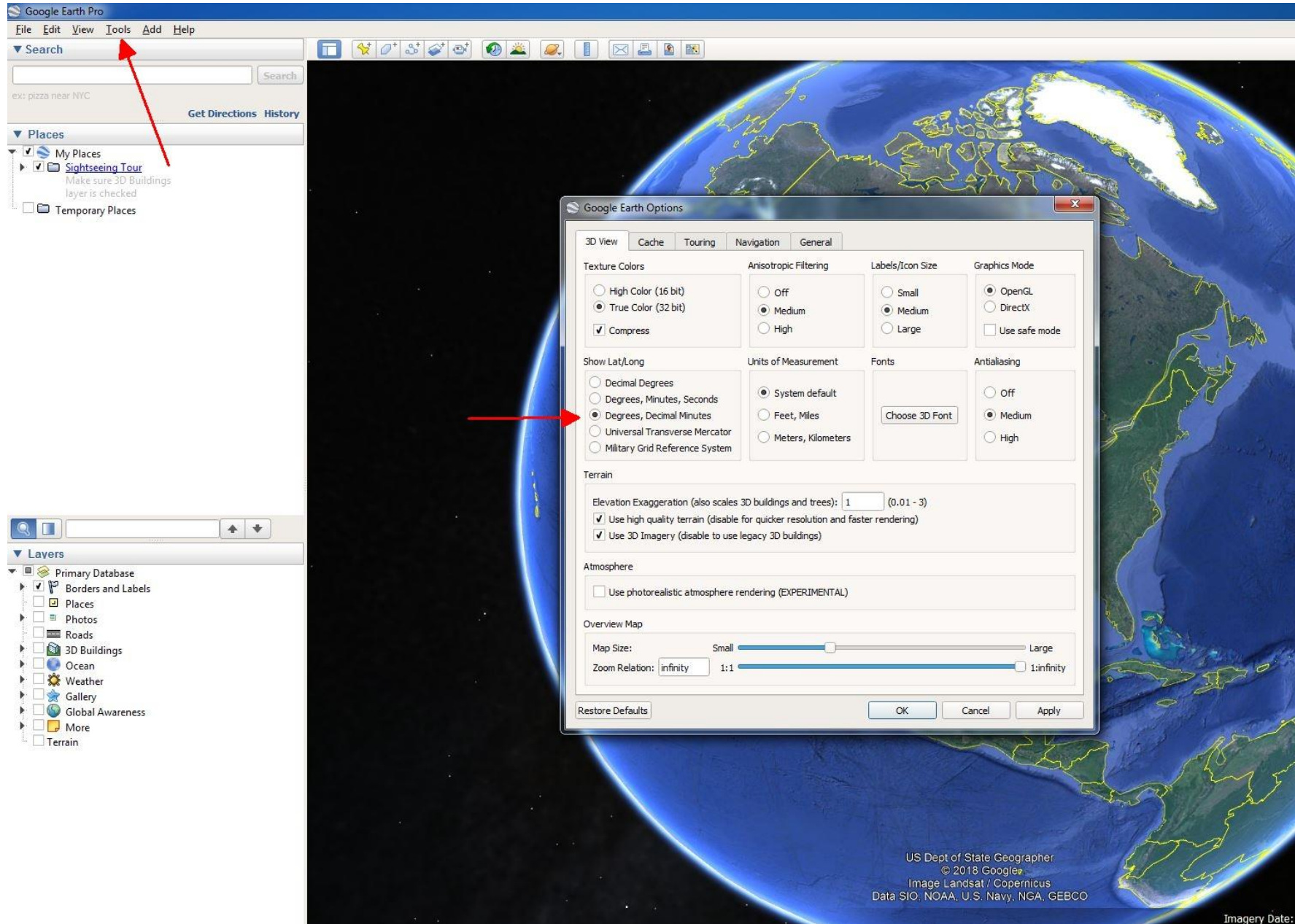
3. Click Accept & Download.



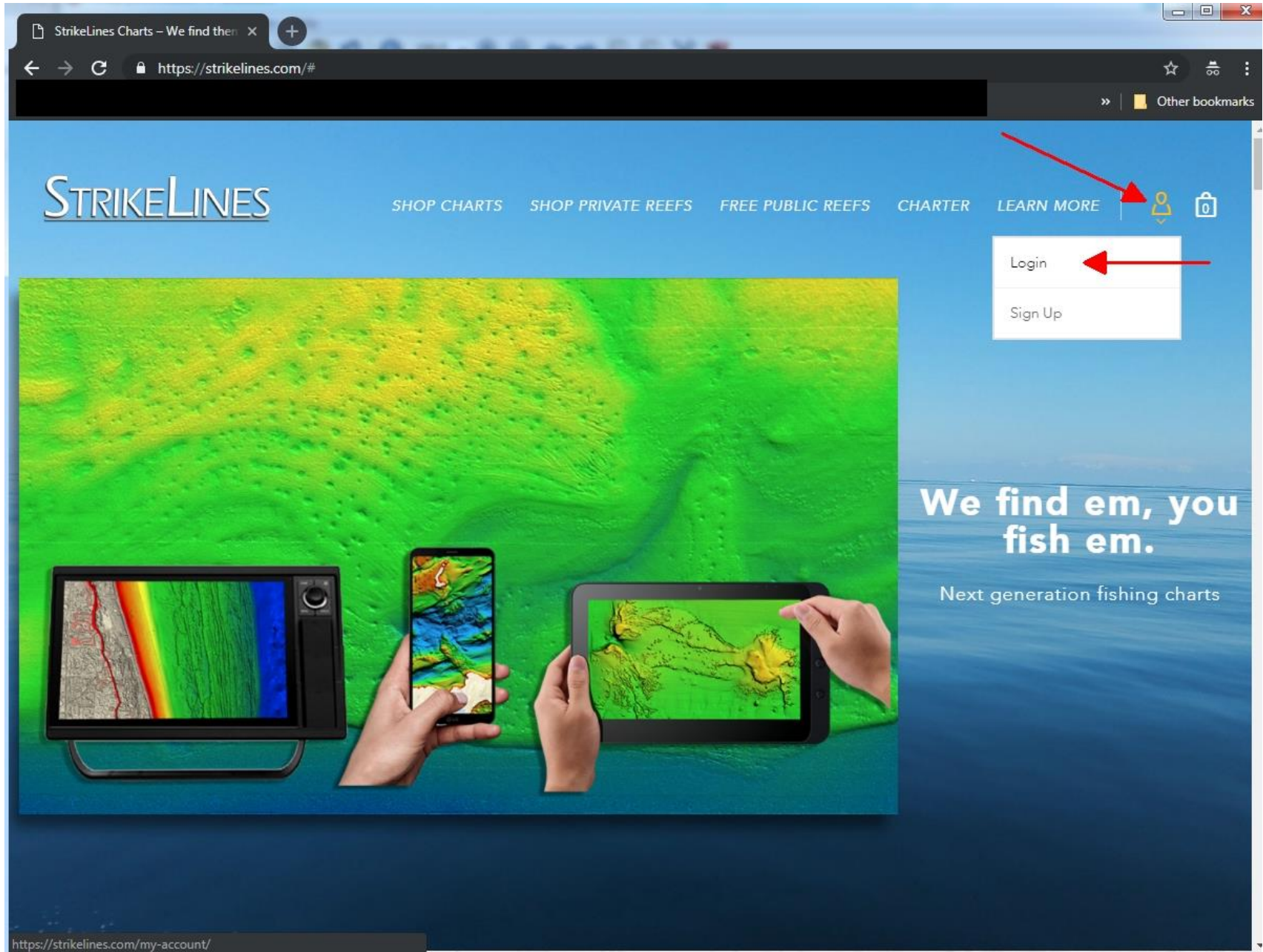
4. Open and run the file you downloaded, GoogleEarthProSetup.exe. Google Earth Pro will install itself. Accept any prompts.
5. If Google Earth Pro does not automatically open after installation, open Google Earth Pro.
6. At the top of the Google Earth window, go to Tools and select Options. The Google Earth Options window will open.



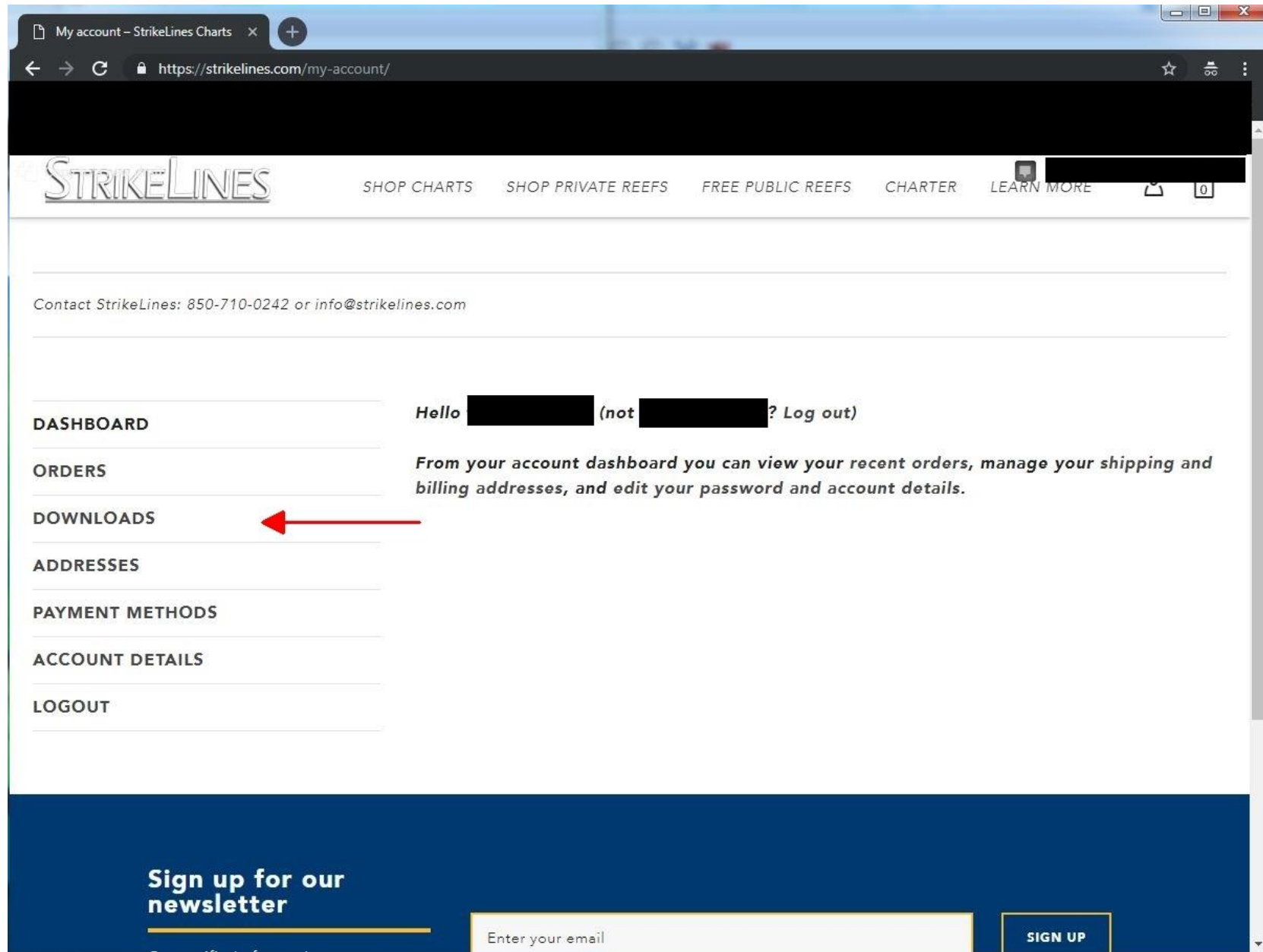
7. Select the Lat/Long coordinate format you use (usually Degrees, Decimal Minutes). Click OK.



8. Minimize Google Earth, open your web browser, go to StrikeLines.com and login to your account.



9. Go to Downloads.



10. Download the chart you wish to load.

PAYMENT METHODS

ACCOUNT DETAILS

LOGOUT

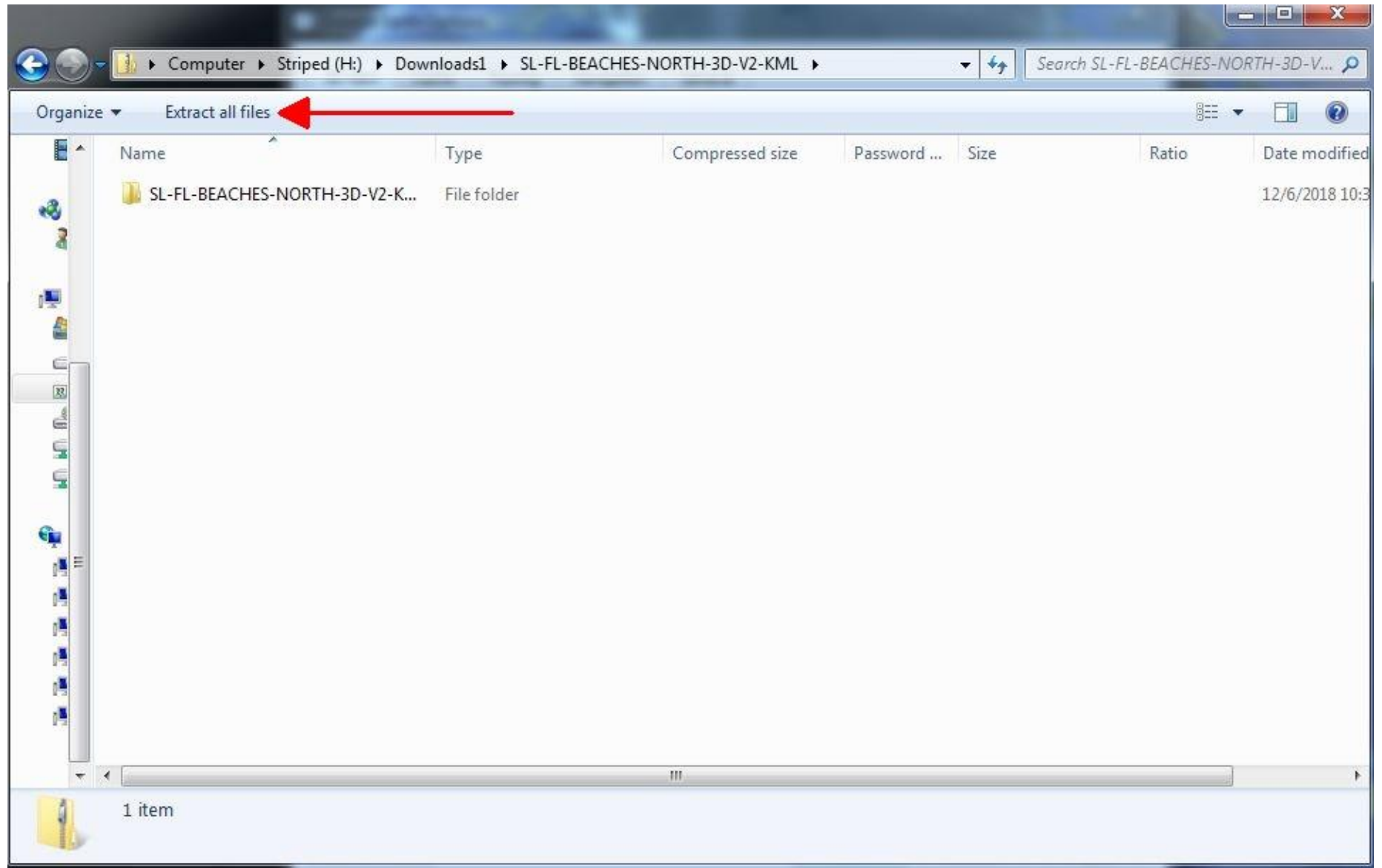
3D New York Offshore - iPhone/iPad	∞	Never	↓ IPHONE AND IPAD INSTRUCTIONS
3D Gulf of Maine - iPhone/iPad	∞	Never	↓ STRIKELINES GULF OF MAINE 3D IPHONE/IPAD
3D Gulf of Maine - iPhone/iPad	∞	Never	↓ INSTRUCTIONS
3D Middle Grounds - iPhone/iPad	∞	Never	↓ IOS INSTRUCTIONS
3D Middle Grounds - iPhone/iPad	∞	Never	↓ 3D MIDDLE GROUNDS
Pipeline - Google Earth (iPhone/Android/PC)	∞	Never	↓ SL-TAMPA-PIPELINE-KML
Pipeline - Google Earth (iPhone/Android/PC)	∞	Never	↓ SIDE-SCAN IMAGERY
3D Louisiana Nearshore - Google Earth (PC)	∞	Never	↓ SL-LOUISIANA-3D
3D Florida East Coast Beach Reefs - Google Earth (PC)	∞	Never	↓ FL BEACH REEFS - NORTH - KML
3D Florida East Coast Beach Reefs -	∞	Never	↓ FL BEACH REEFS - SOUTH -

11. Download the file. You can also right click, select save link as, and save the file to a location you'll remember.

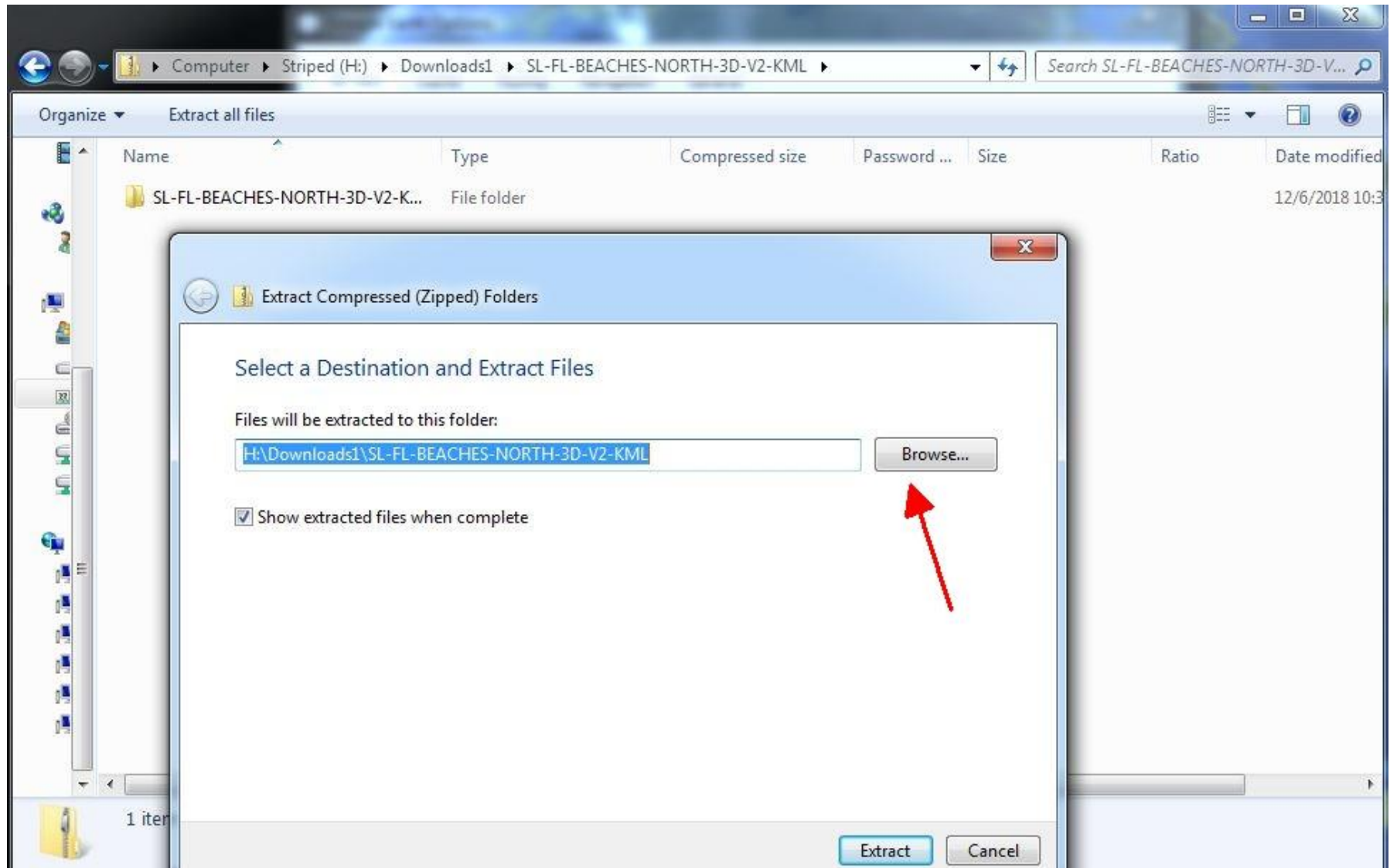
12. Wait for the chart to finish downloading. The 3D charts can take an hour or more to download.

Google Earth Instructions

13. Find the file you downloaded. If it is a waypoint based chart, like the Big Bend or Sarasota Offshore, open the file and the chart will load. Skip to step 20.
14. If it is a 3D chart, the file name should be something like SL-XX-CHART-NAME-3D-FILETYPE.ZIP. Double click the file.
15. Inside you'll see a folder with a similar name. Click Extract all files at the top of the window.

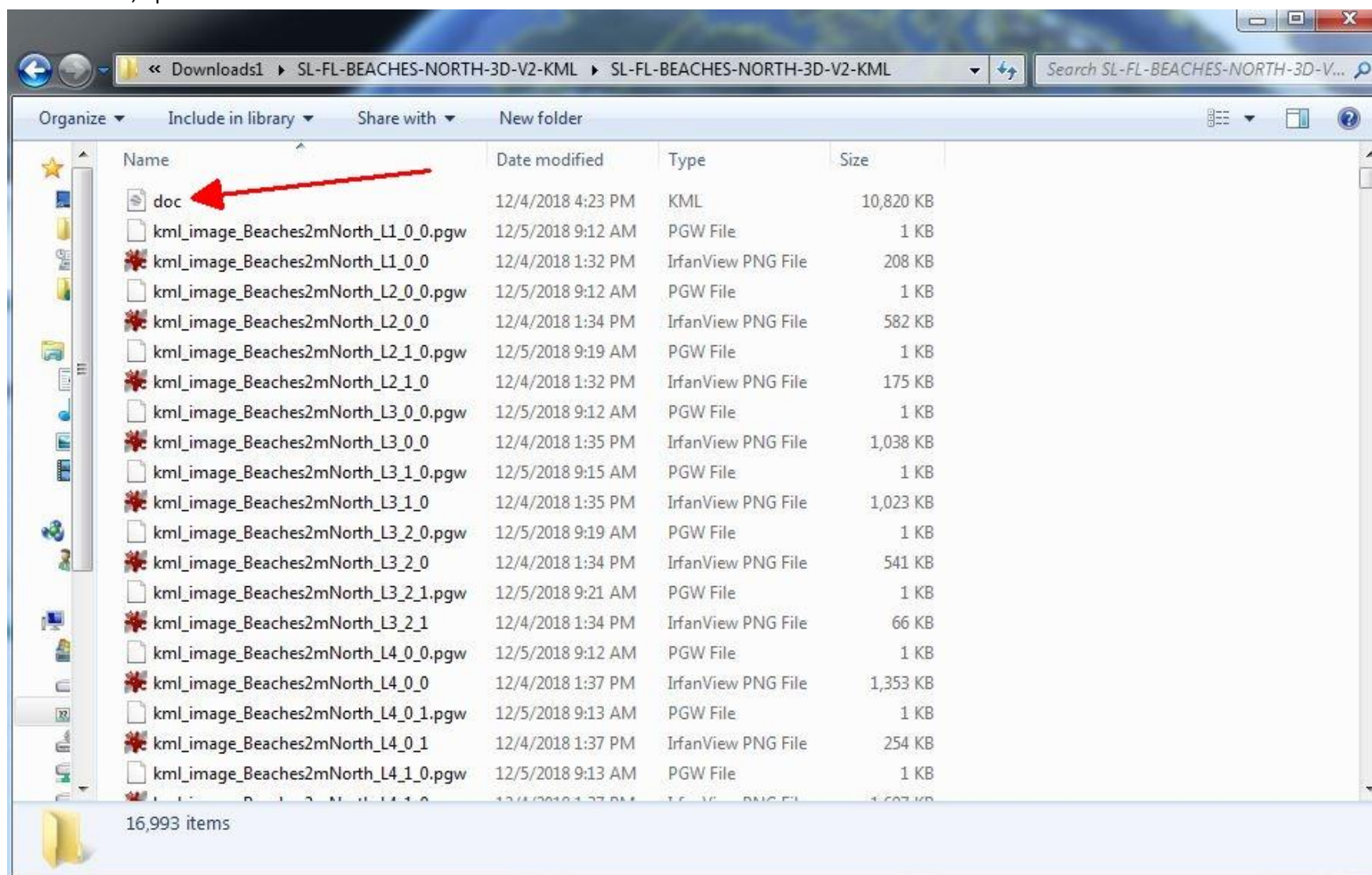


16. Choose a destination on your computer to extract the chart files to. This should be a location that you can find again.



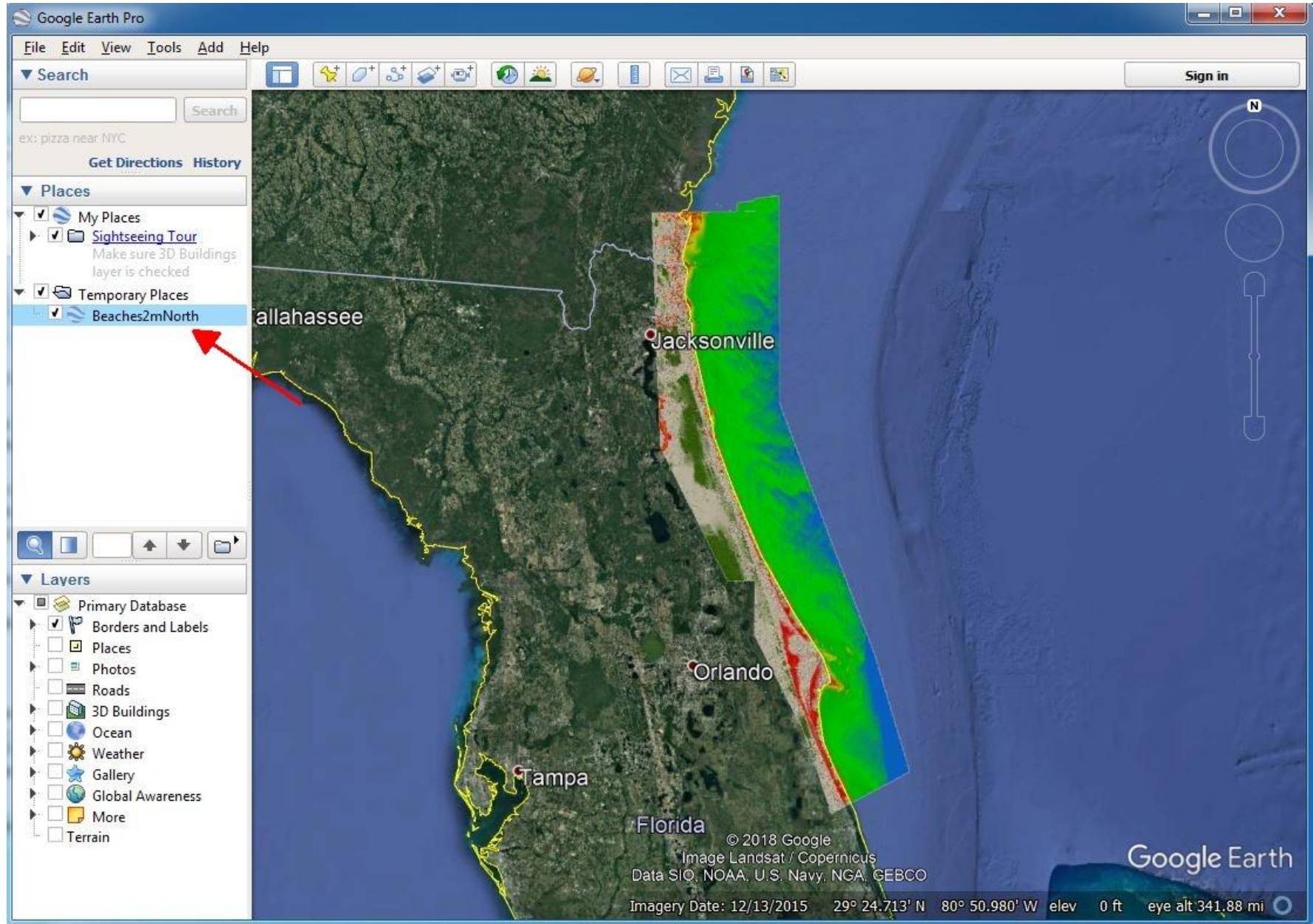
17. The extraction process will take several minutes for 3D charts. When finished navigate to the location of the extracted files.

18. For 3D charts, open the folder with the extracted files and double click the doc.kml file.

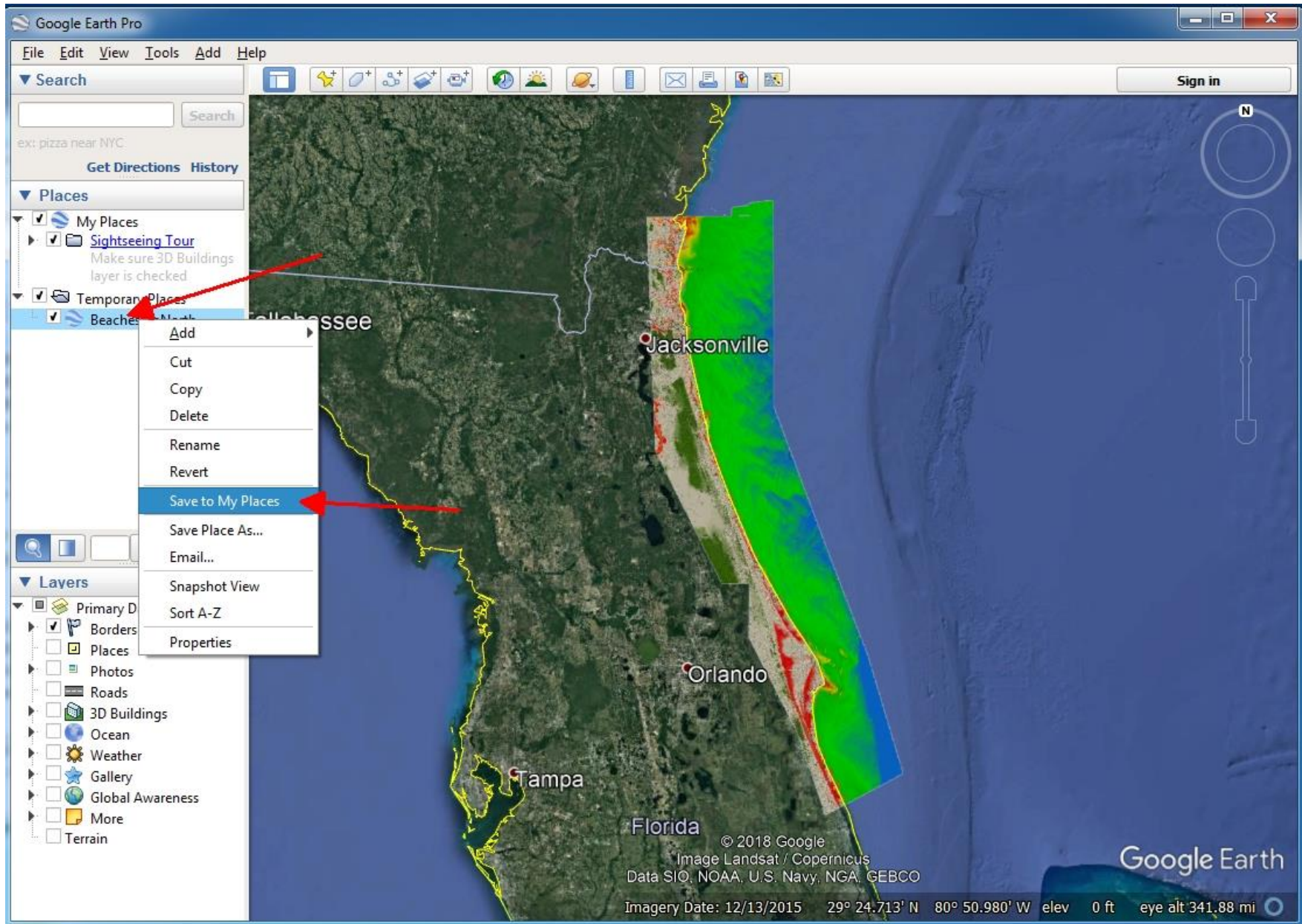


19. For charts that aren't 3D and to open Simrad/Lowrance/Raymarine or GPX files in Google Earth, drag and drop the chart files into Google Earth.

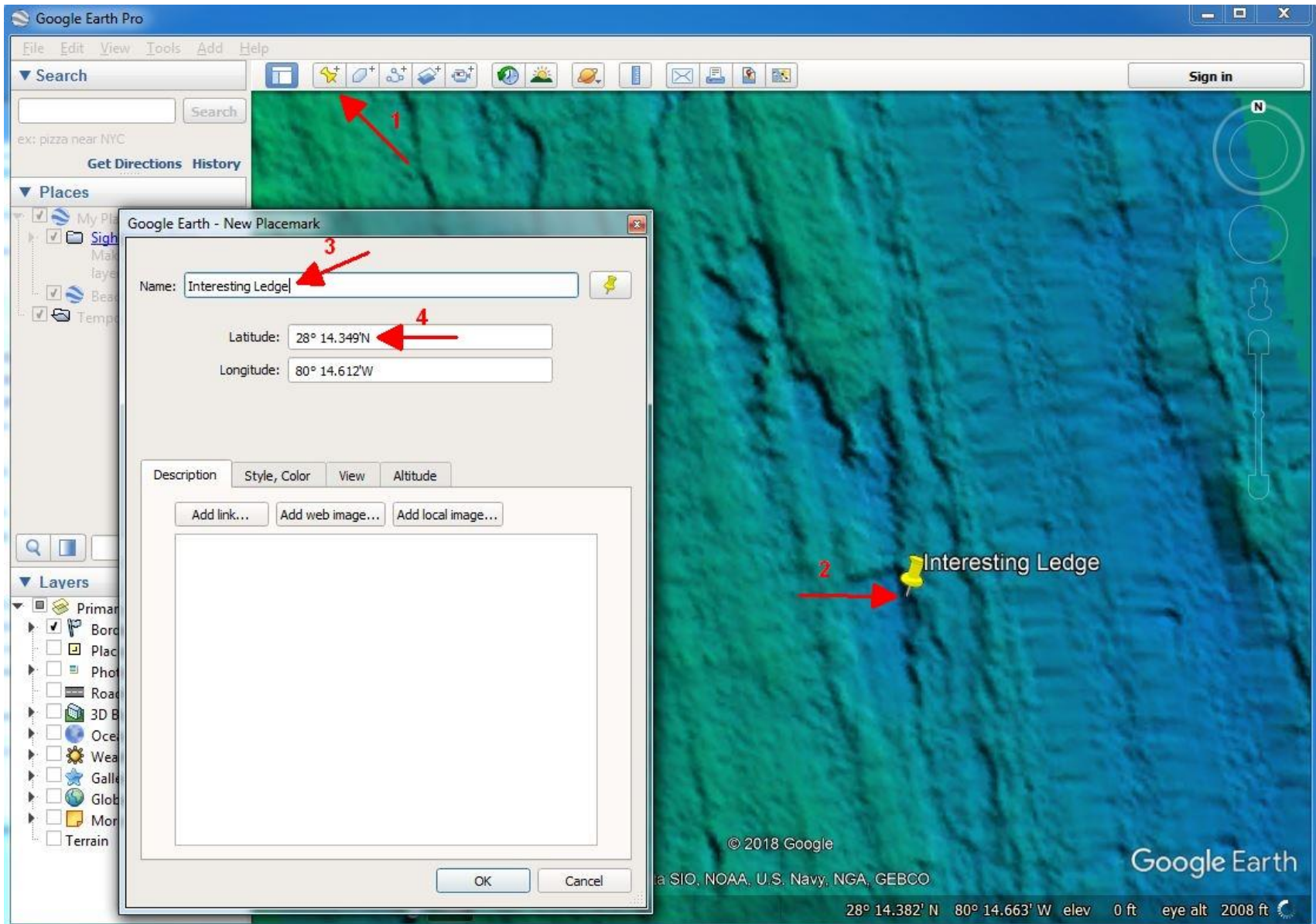
20. The file chart will open in Google Earth. You'll see the chart listed in your Temporary Places on the left side Places panel.



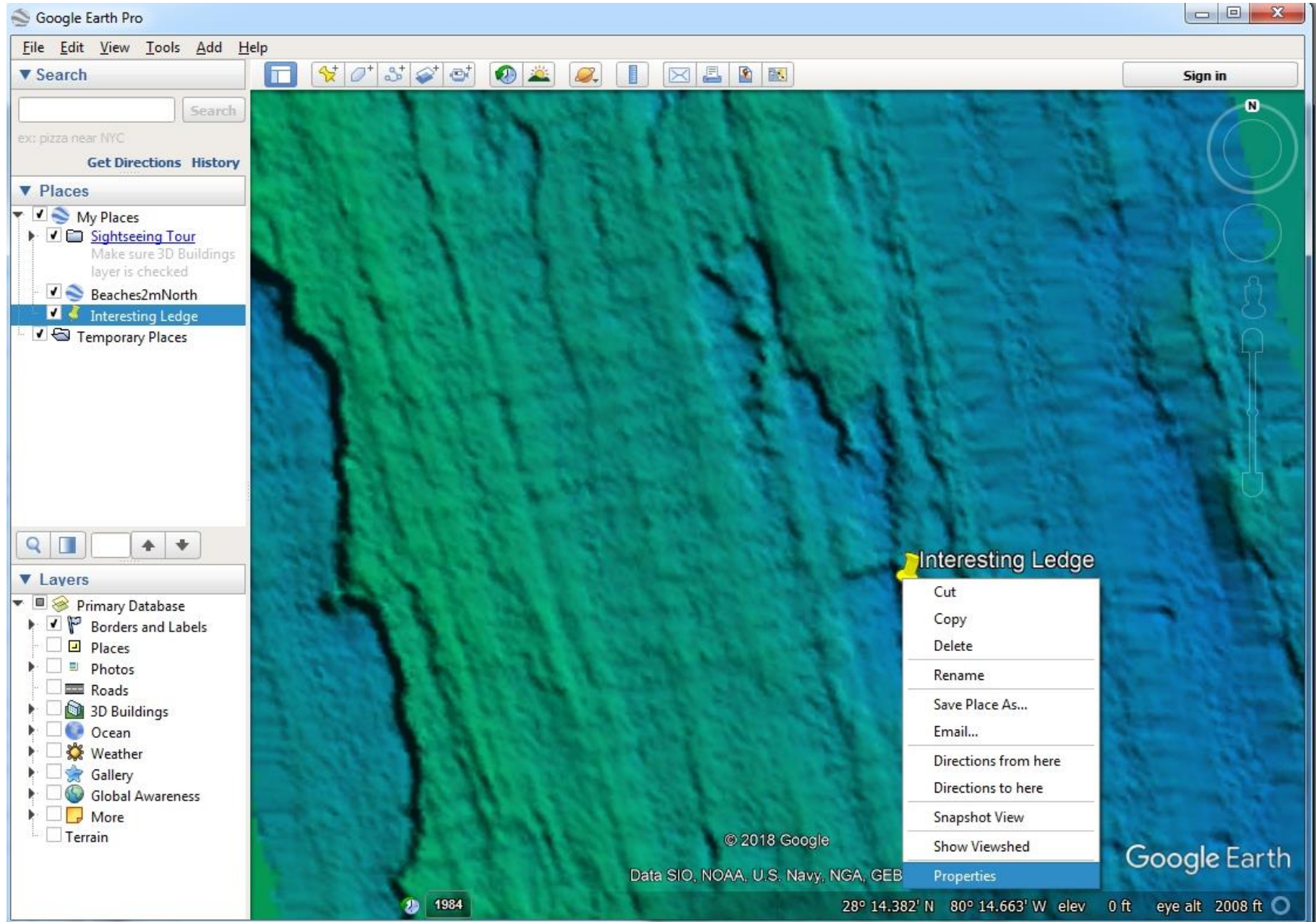
21. Right click the chart name in the Places panel. Select Save to My Places. Now whenever you open Google Earth you will see the chart under your places and you can view the chart without having to open the doc.kml file. To enable or disable the chart, click the small check box next to the chart name.



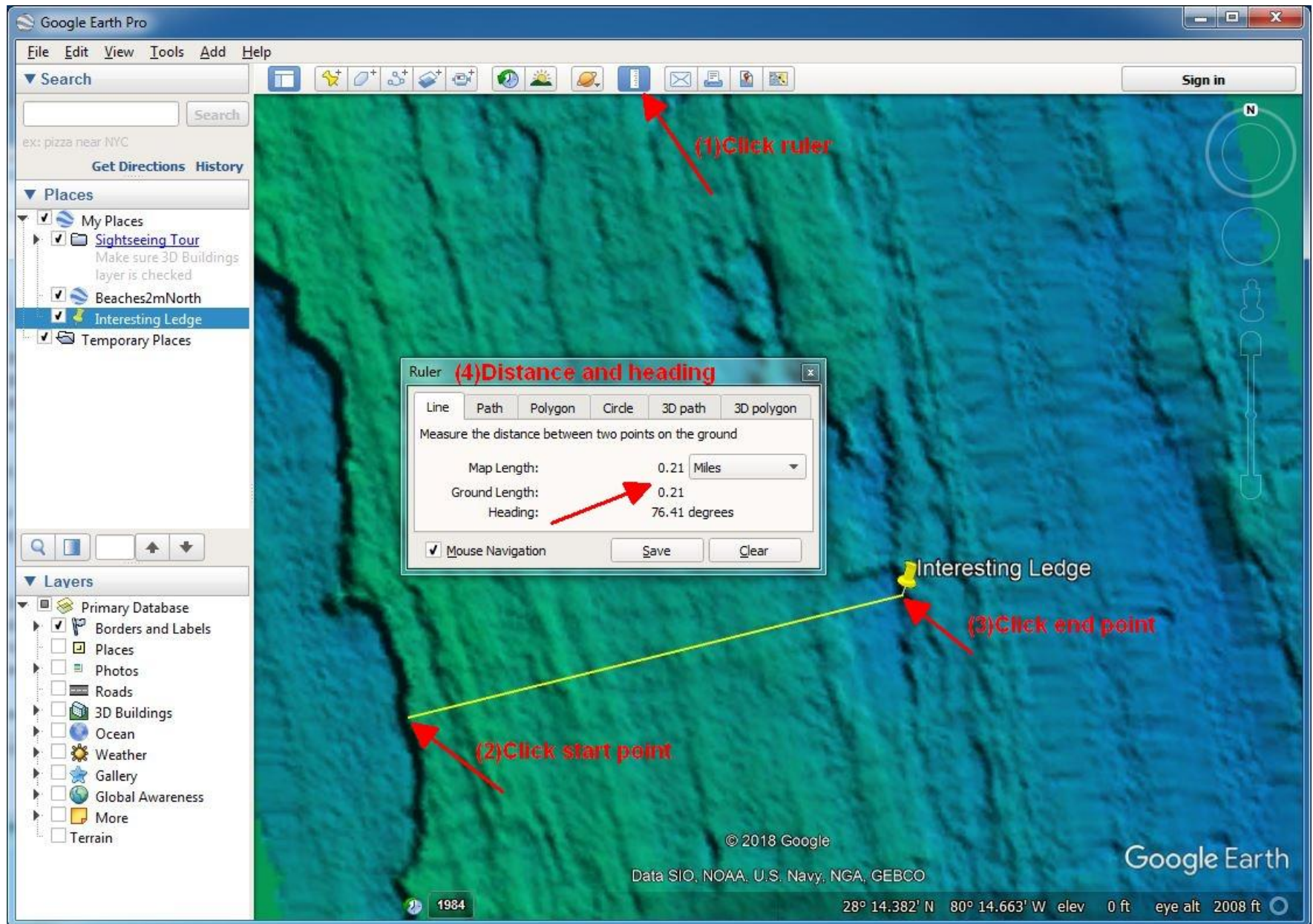
22. **To create a waypoint or find coordinates for a spot**, click the yellow pin icon at the top of the screen (1). Drag the pin to the spot on the chart you want to mark(2). Name the spot appropriately (3). The coordinates for the spot are also displayed (4). You can add a description and change the waypoint properties with the tabs below the coordinates. Click OK when finished and the waypoint will be saved to My Places.



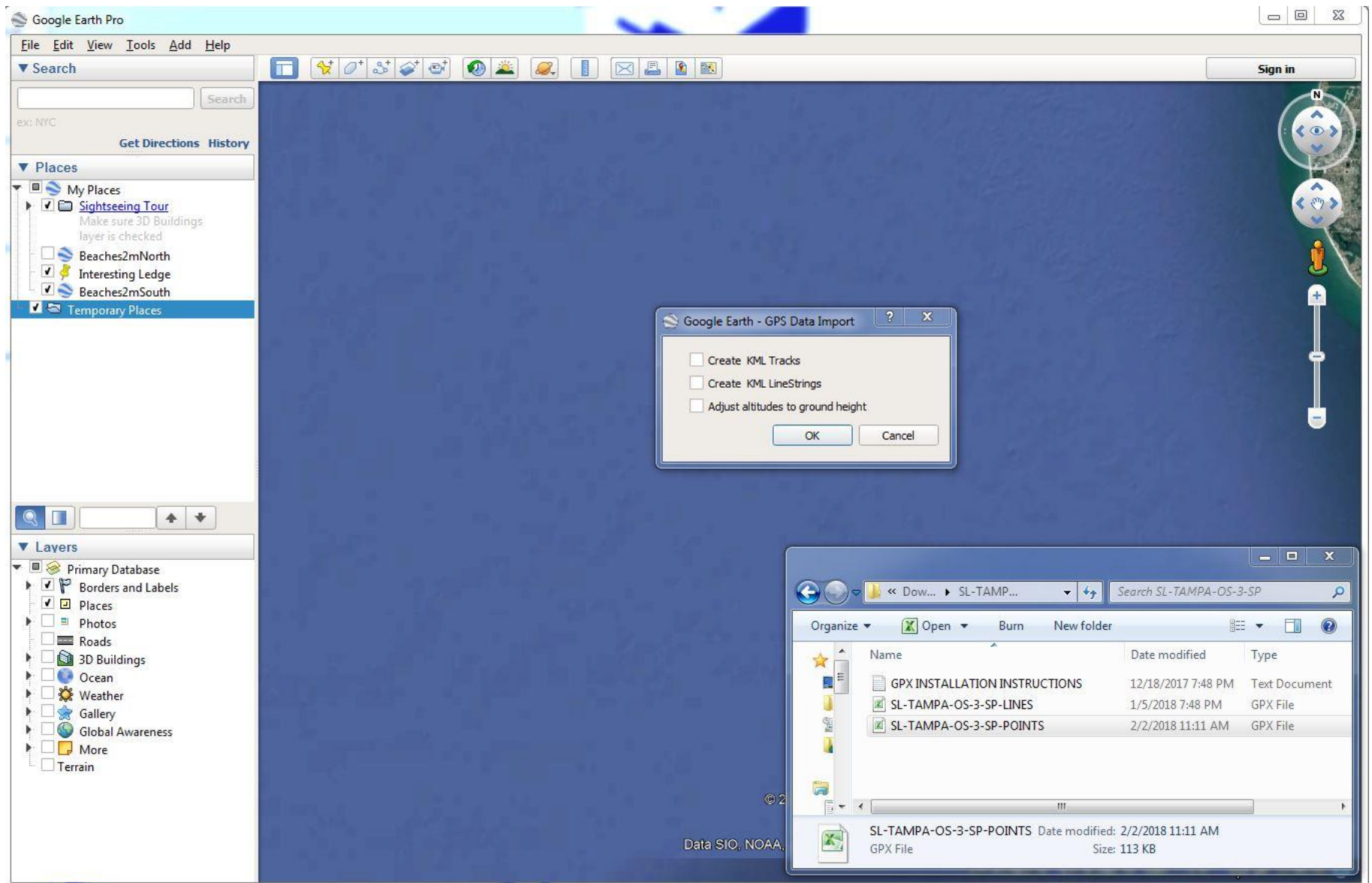
23. If you want to edit the waypoint or **access coordinates for a waypoint**, right click the waypoint and select properties.



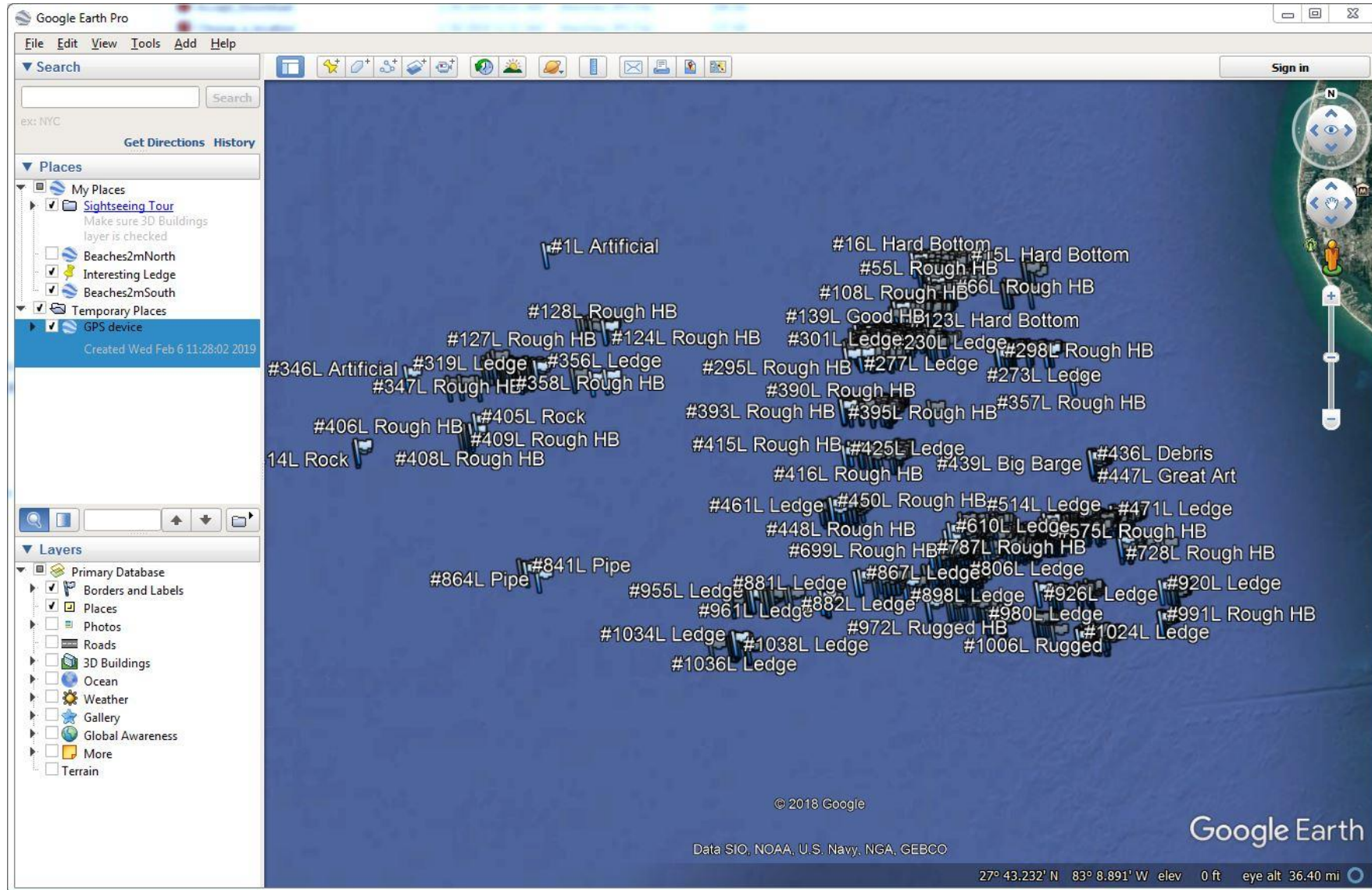
24. **To measure distance to a point**, click the ruler icon at the top of the screen (1), click your start point (2), click your end point (3). The distance and heading will be displayed (4).



25. To open a waypoint chart in Google Earth, extract the zip file you downloaded. Find the GPX files inside it and drag and drop the points file into Google Earth. The GPS data import window will pop up. Unselect any check boxes and click ok. You can also import GPX waypoint files from your chart plotter in the same way.



26. Like other waypoints, you can right click on these, select properties, and view coordinates.



27. To display depths or NOAA charts, go to <https://nauticalcharts.noaa.gov/data/gis-data-and-services.html>, click Seamless Raster Nautical Chart Services, scroll down and download the KMZ.

The screenshot shows a web browser window with the URL <https://nauticalcharts.noaa.gov/data/gis-data-and-services.html>. The page title is "GIS Data & Services" with the subtitle "Supporting non-traditional users of nautical chart information". Below the subtitle is a nautical chart image. A text block states: "Coast Survey uses nautical charting data to produce GIS-friendly products for a world of uses outside of navigation. Find the product or service that supports your application." Below this is a vertical list of four blue buttons, each with a white plus icon: "ENC Direct to GIS", "Seamless Raster Nautical Chart Services", "GIS Applications & Viewers", and "Gulf of Mexico Oil and Gas Lease Blocks". A red arrow points to the "Seamless Raster Nautical Chart Services" button. To the right is a "Related Links" section with a list of links: "nowCoast", "U.S. Maritime Limits and Boundaries", "NOAA ENC®", "NOAA RNC®", "RNC Tile Service", "Precision Navigation", and "Wrecks and Obstructions". The browser's address bar shows the URL with a hash: <https://nauticalcharts.noaa.gov/data/gis-data-and-services.html#accordion-seamless-raster-nautical-chart-services>.

GIS Data & Services

Supporting non-traditional users of nautical chart information

Coast Survey uses nautical charting data to produce GIS-friendly products for a world of uses outside of navigation. Find the product or service that supports your application.

- ENC Direct to GIS
- Seamless Raster Nautical Chart Services**
- GIS Applications & Viewers
- Gulf of Mexico Oil and Gas Lease Blocks

Related Links

- [nowCoast](#)
- [U.S. Maritime Limits and Boundaries](#)
- [NOAA ENC®](#)
- [NOAA RNC®](#)
- [RNC Tile Service](#)
- [Precision Navigation](#)
- [Wrecks and Obstructions](#)

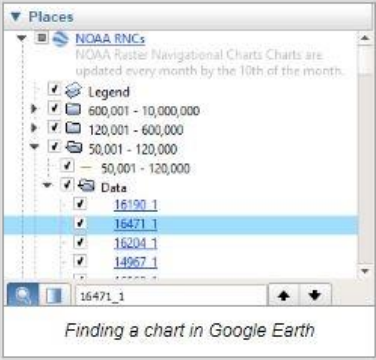
<https://nauticalcharts.noaa.gov/data/gis-data-and-services.html#accordion-seamless-raster-nautical-chart-services>

GIS Data & Services

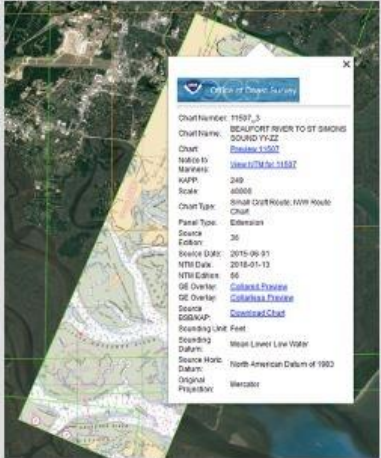
https://nauticalcharts.noaa.gov/data/gis-data-and-services.html#seamless-raster-nautical-chart-services

Bookmarks Official Records AmazonSmile Chase Online - Logon Vonage Log In Messages for web Other bookmarks

glass below the list and entering the name of the chart. Chart information can be accessed by double clicking on a specific chart to zoom to its location and then clicking on the chart outline. You also have the option to view an overlay of the chart directly in Google Earth.









Finding a chart in Google Earth



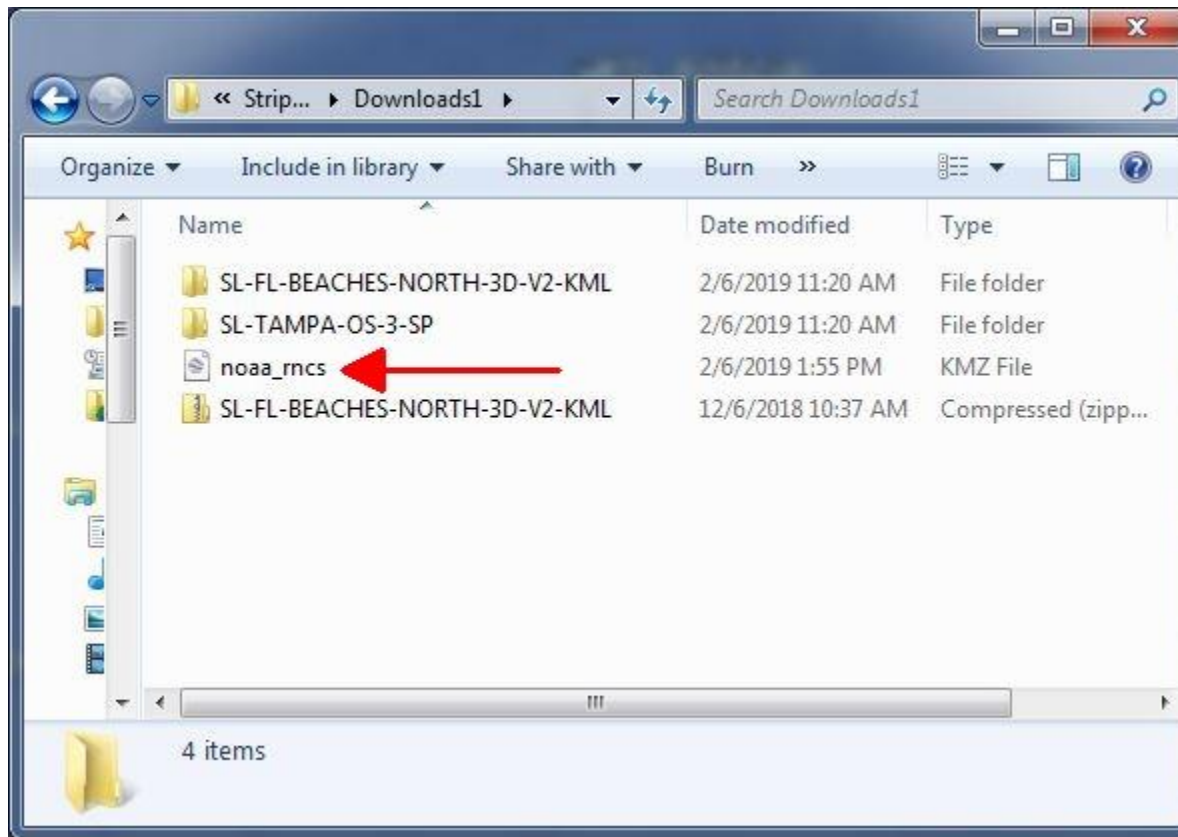
Viewing a collarless overlay of chart 11507_3

Map Services and Data Downloads

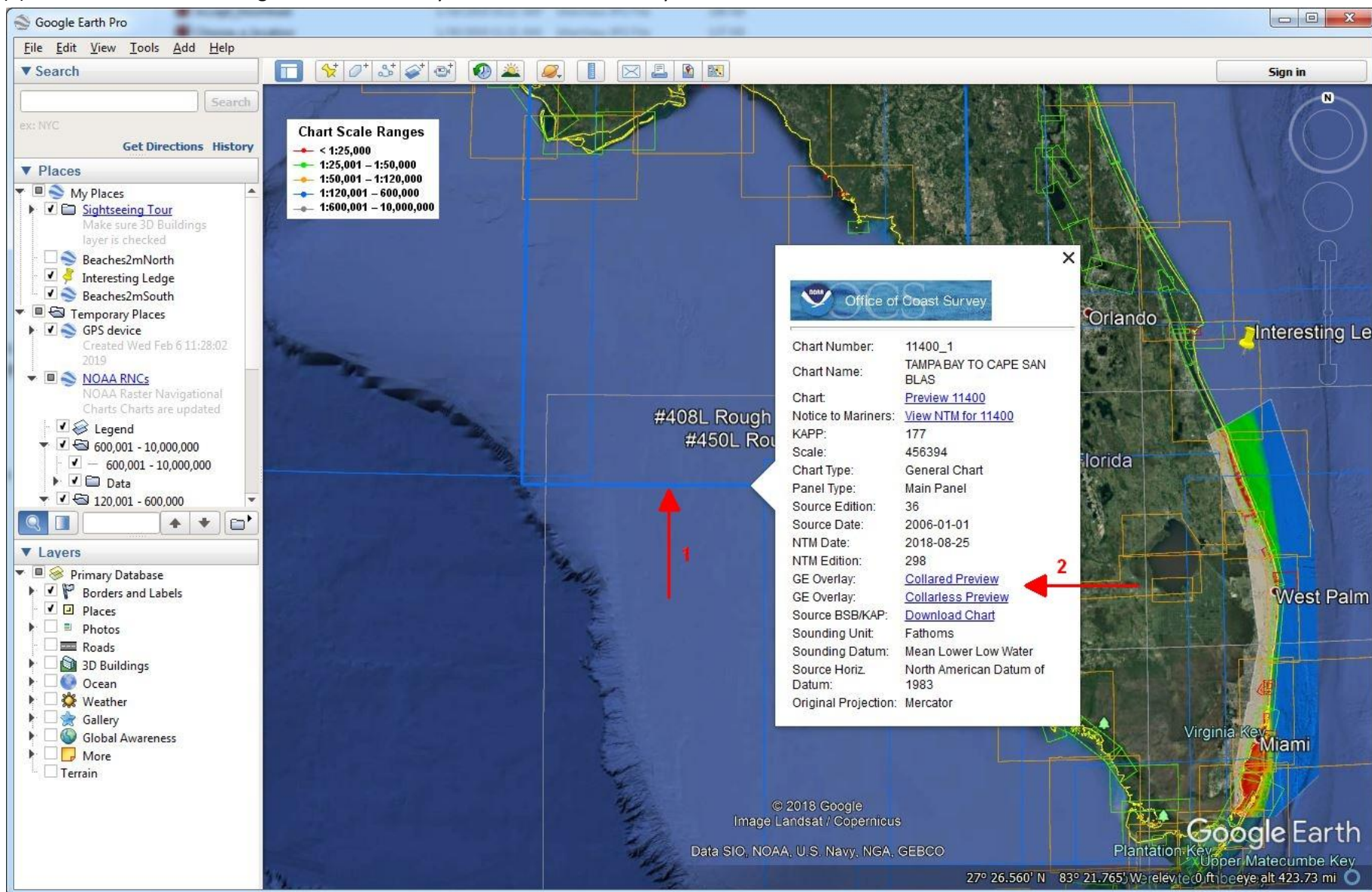
Title	ArcGIS Viewer	REST Service	ArcMap Layer	Web Map Service	KMZ	Metadata
Seamless RNC						

Seamless RNC service **DOES NOT** meet USCG chart carriage requirements for commercial vessels.

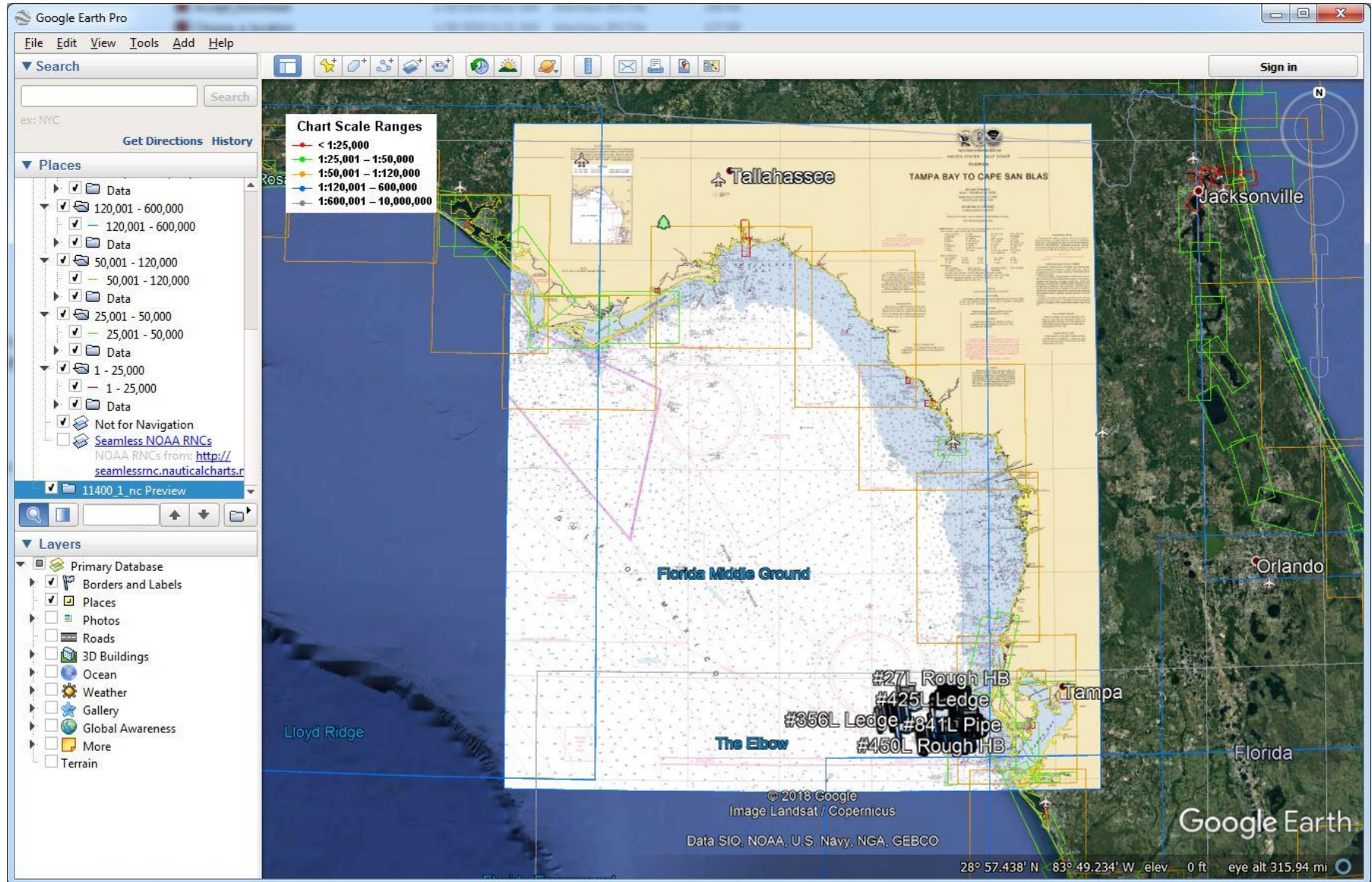
28. Save the KMZ file somewhere you'll be able to find it.
29. Open the KMZ file.



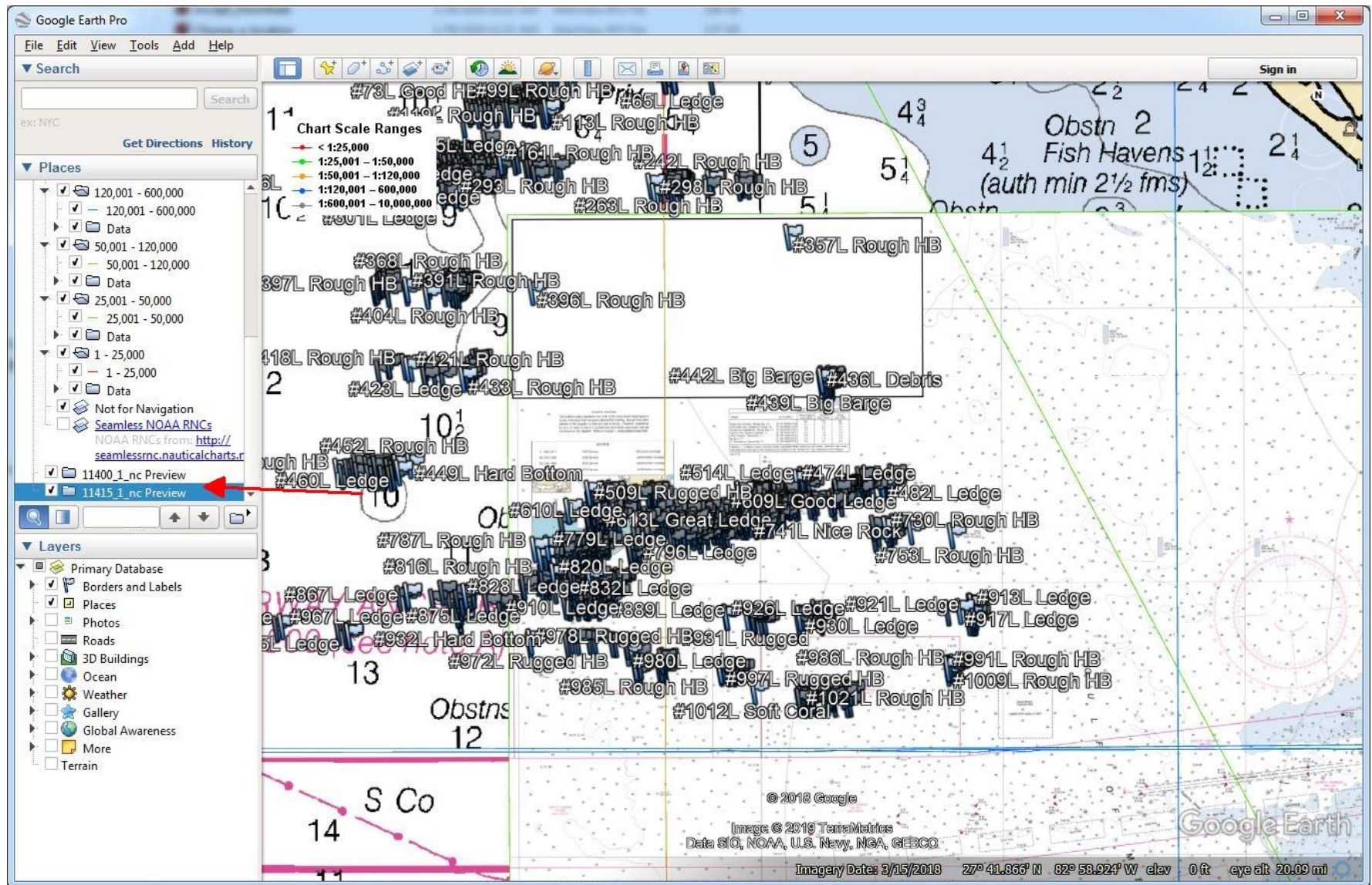
30. The NOAA KMZ will load in Google Earth and you'll see colored rectangles everywhere. These represent available charts. Note the Chart Scale Range in the upper left hand corner. To load a chart, click on the colored border (1). A window will appear. Select either Collared Preview or Collarless Preview (2). Collarless cuts off the edges of the chart. Play with both to see which you like.



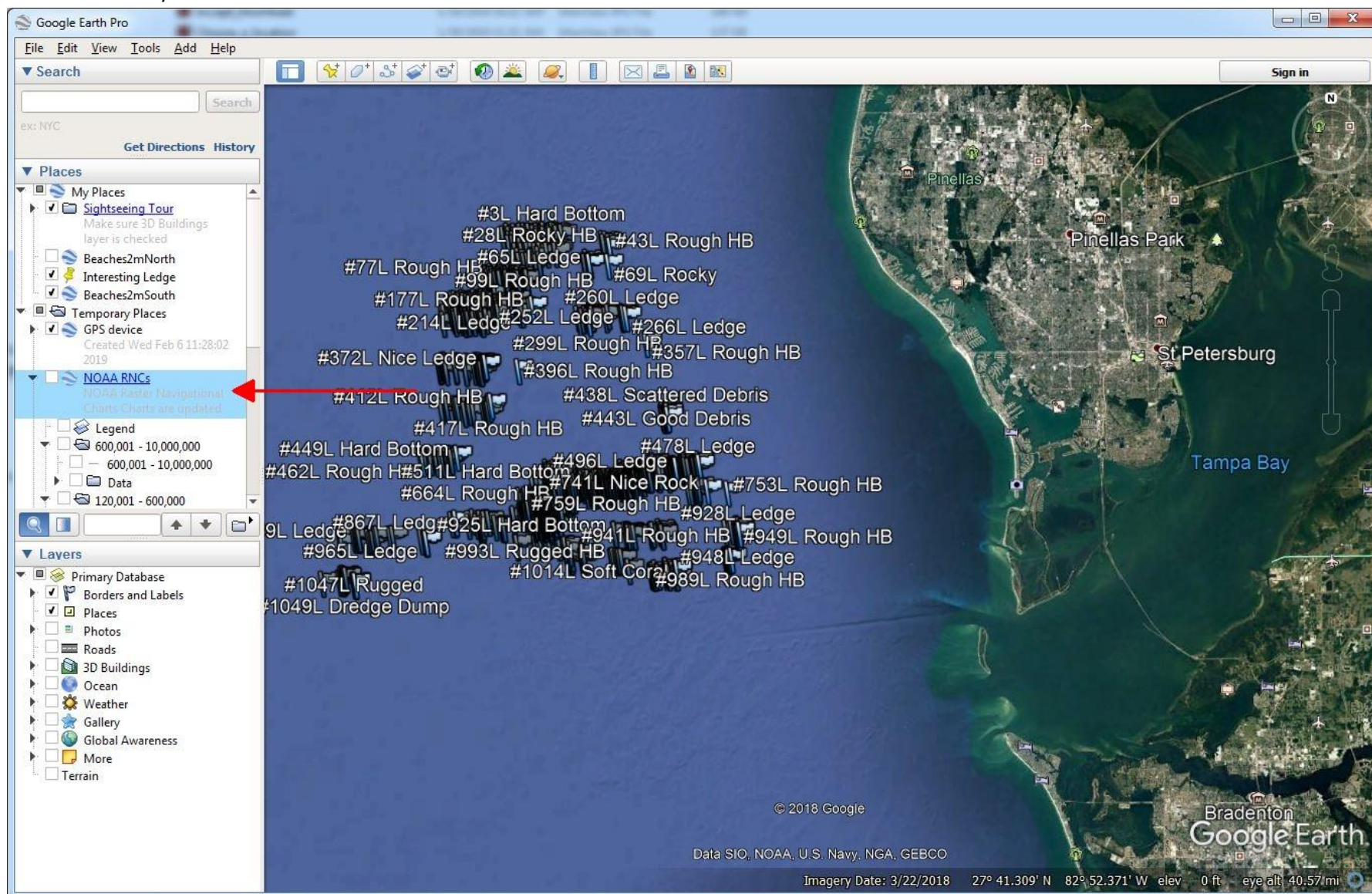
31. The chart will appear after you select the preview. You can zoom in to view depths and features.



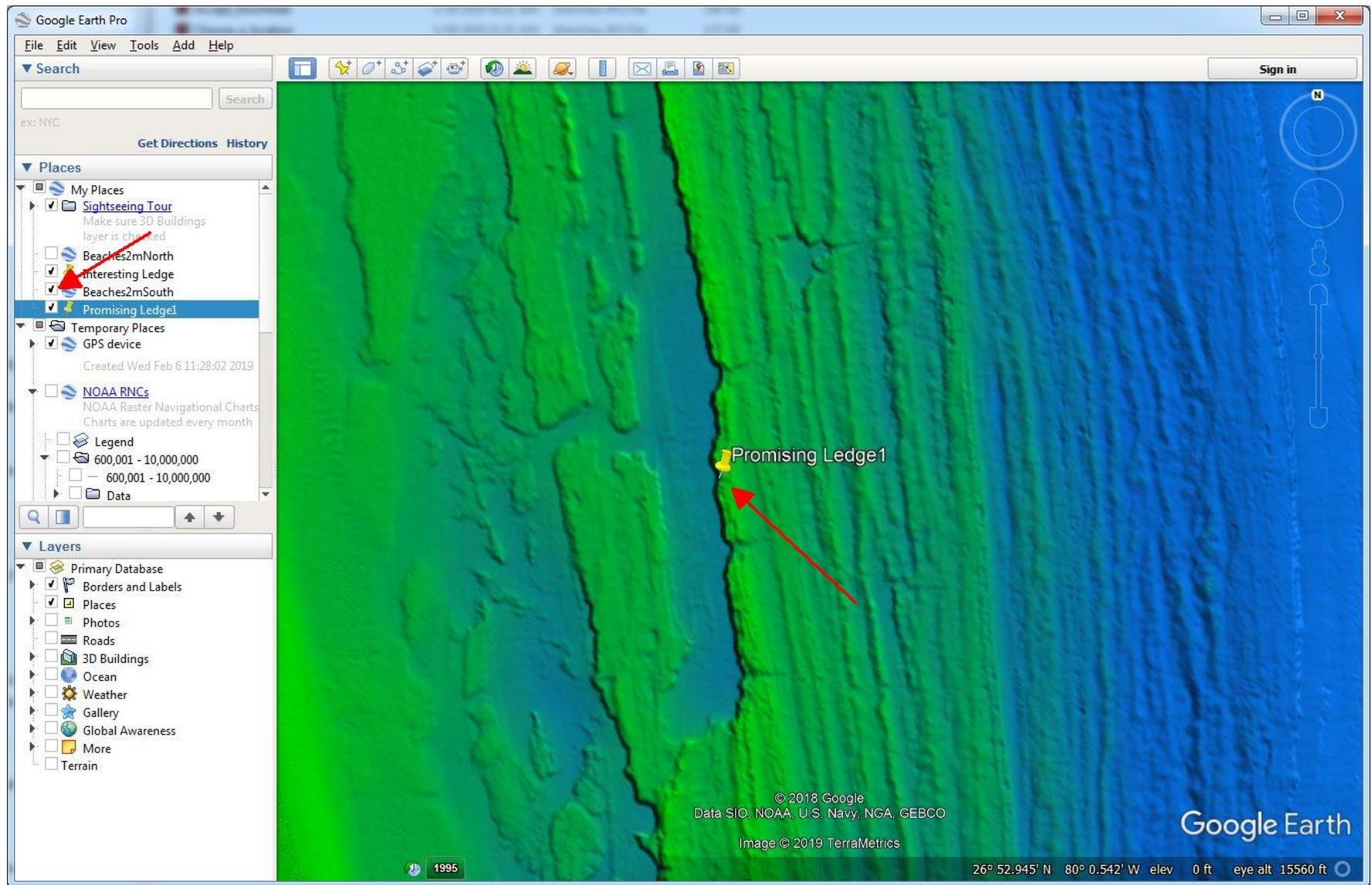
32. You can load multiple charts at once following the same method. To enable or disable a chart, click on the small box to the left of the chart name. Remember that depths may be in fathoms (six feet), meters, or feet depending on the chart.



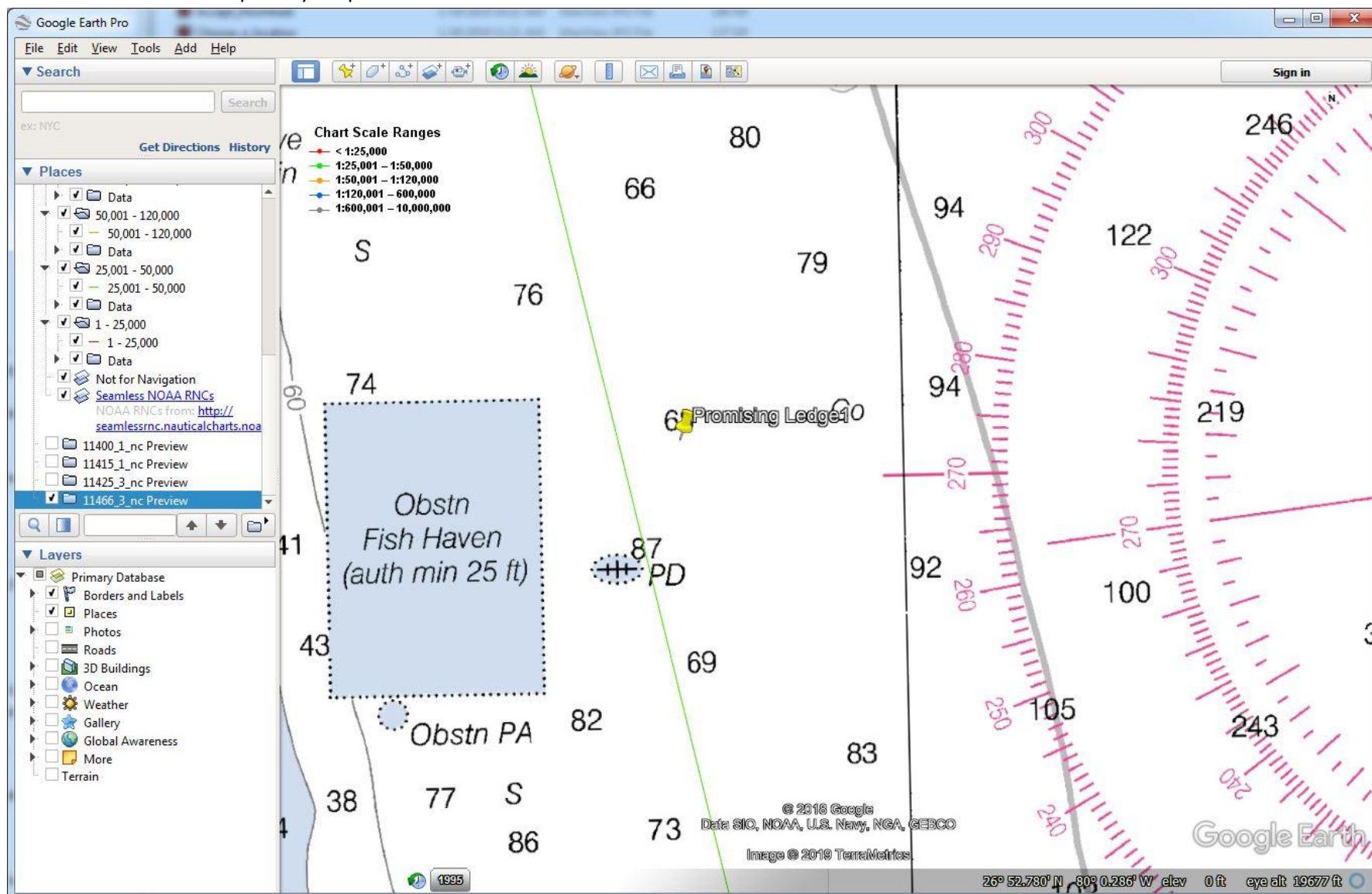
33. To save the NOAA KMZ to your Google Earth so it appears next time you open Google Earth, select and right click the NOAA RNCs in the Places panel. Select Save to My Places.



34. To find the depth of a specific location on a 3D chart, drop a pin (Step 21 in these instructions) at the location and name it appropriately. Then disable the 3D map by clicking the check box next to the chart name.



35. Enable the appropriate NOAA chart for that area (steps 29 and 30). Keep in mind depths may be in fathoms (six feet), meters, or feet depending on the chart. You can see the depth of your pin.



36. You can save individual charts to “My Places” by right clicking the name of the chart and choosing Save to My Places. You can then disable the NOAA KMZ previews and still view the chart you saved. You may need to do this to view a specific chart in its entirety or to see the chart notes.

