

STRIKELINES.com

Custom Fishing Charts

Thank you for your purchase of a StrikeLines 3D chart for Android. The chart is a product of hundreds and hundreds of hours tracking down and processing the best raw multi-beam sonar data from tens of different sources. Using advanced processing software normally reserved for petroleum companies and government funded bathymetry surveys, we slowly synthesized it into a truly unique chart. We're proud of our 3D charts and hope you enjoy using this one as much as we enjoyed creating it.

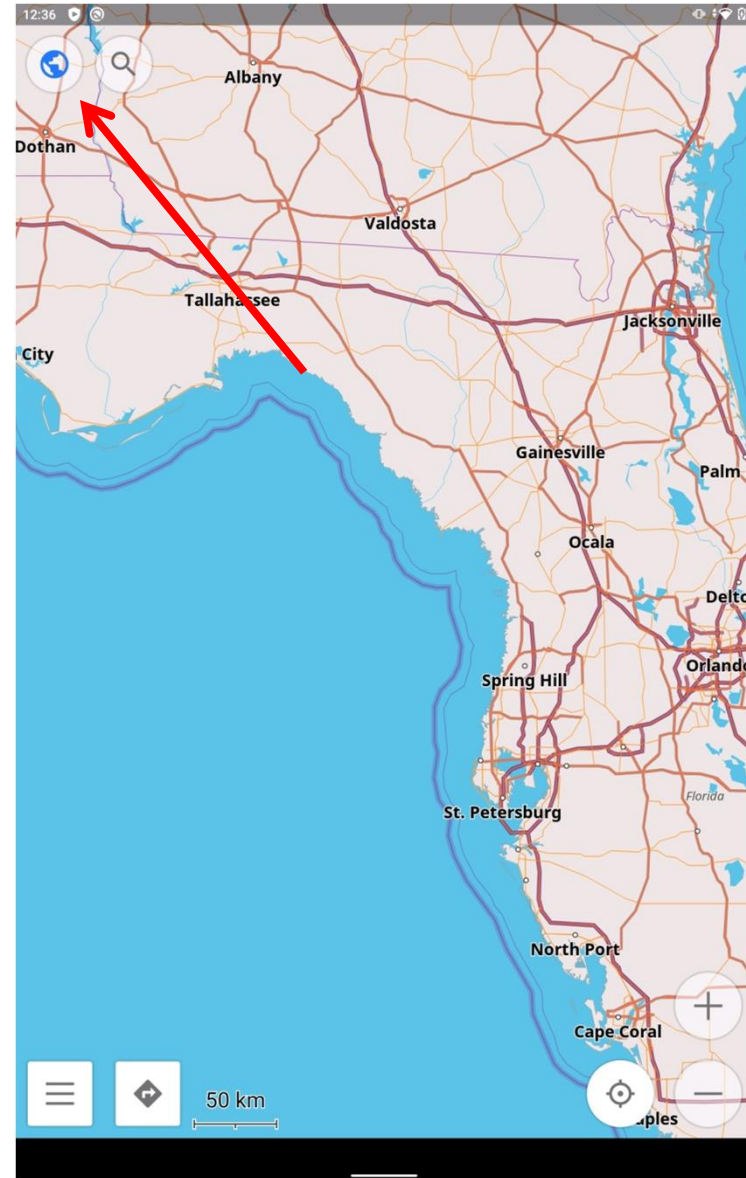
The tablet is already set up with the **OSMand** app installed along with the chart(s) you purchased. Please see the attached screenshots to utilize some of OSMand's features and to enable your chart(s).

*Some charts are broken up into multiple chart files. For these charts, only one file/section of the chart can be viewed at one time. Please see the attached screenshots to switch between the chart files.

Popular multi-file charts include: 3D New York New Jersey Offshore, 3D Long Island Sound, 3D Block Island Sound, 3D Gulf of Maine

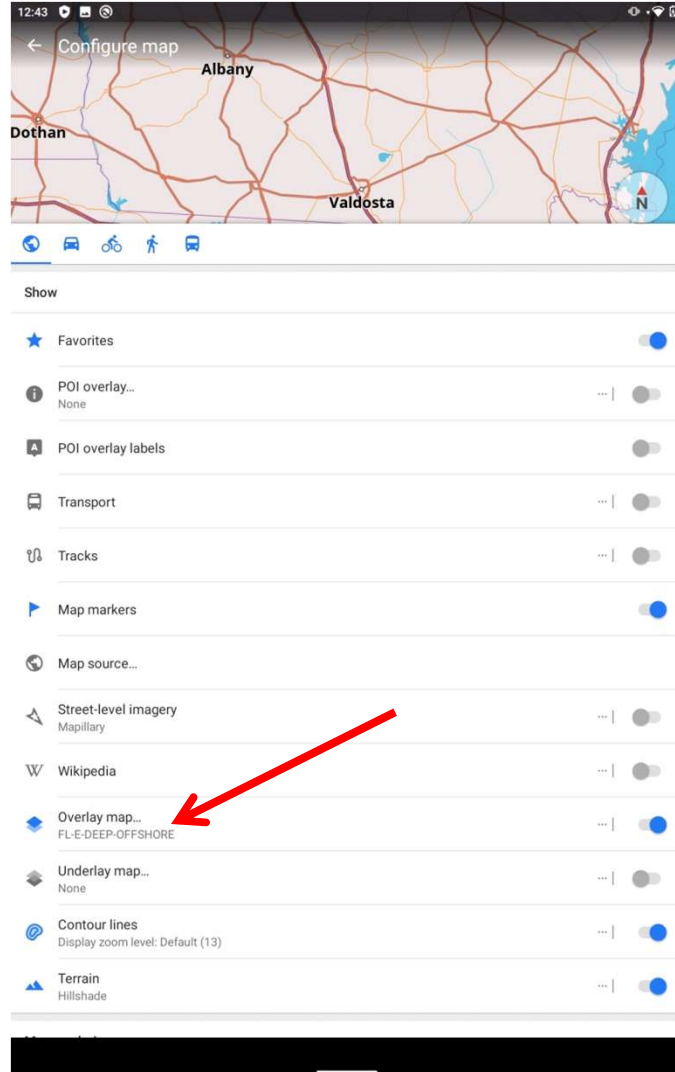
StrikeLines.com
34 Audusson Ave
Pensacola, FL 32507
info@strikelines.com
850.710.0242
StrikeLines.com

- To get started, turn on the tablet, then open OSMand by clicking on the orange circle icon.
- When you open the app, it might ask you to download a basemap, just press skip in the top right corner.
- Click the globe icon in the top left corner.

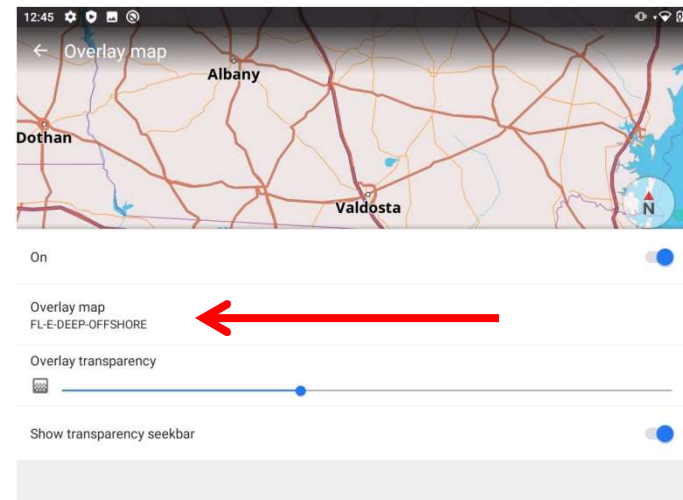


For 3D Chart files follow the following steps, for Waypoints or Wrecks charts, skip to page 7

- The configure map menu should appear.
- Select Overlay map

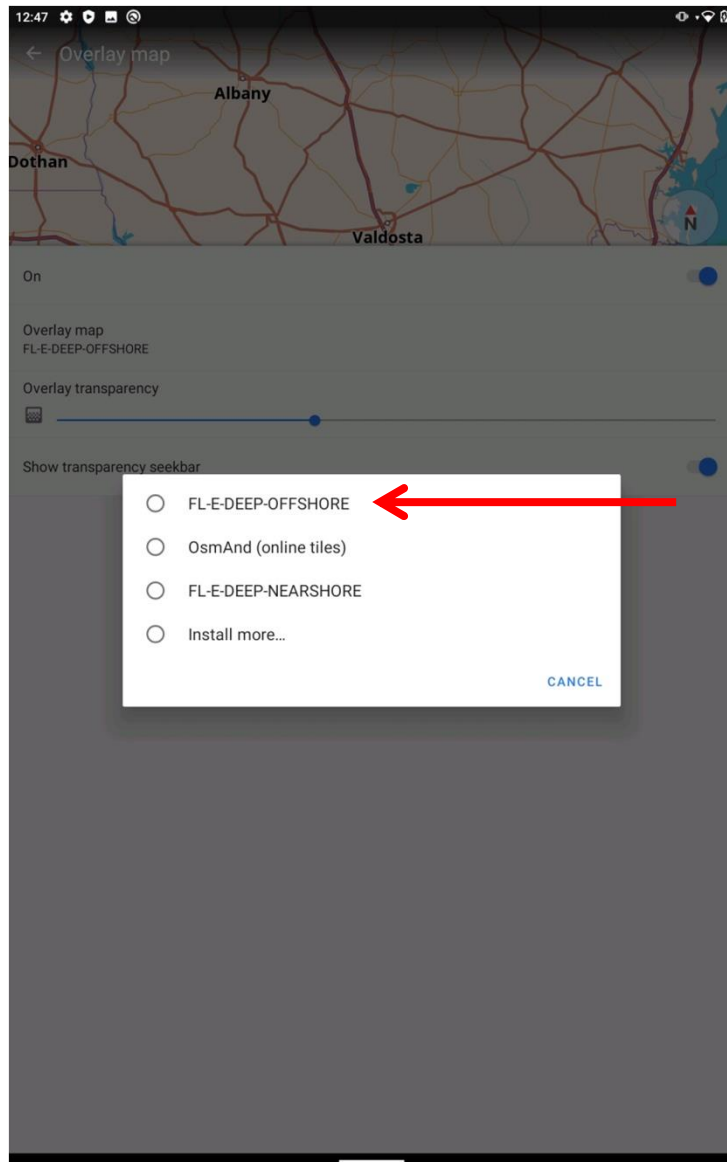


- This is where you will access the 3D chart files.

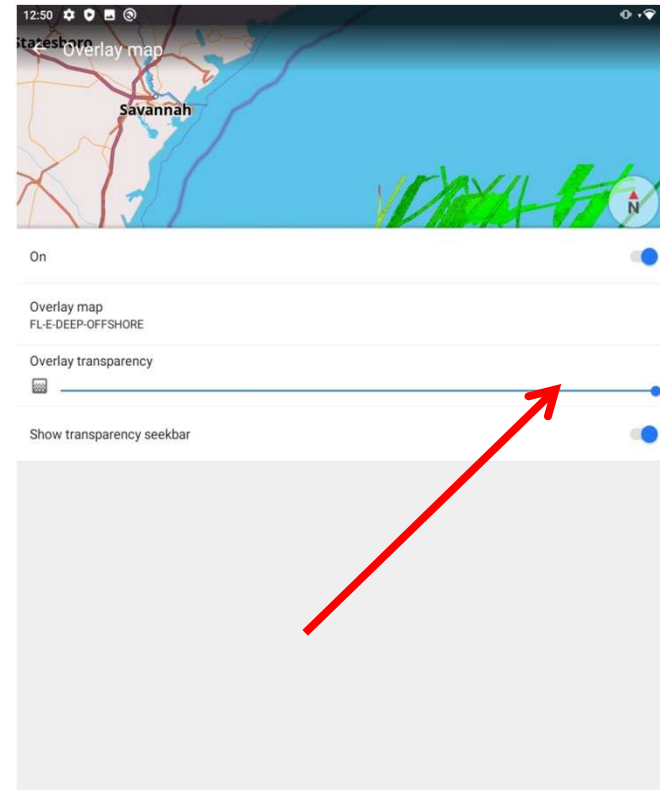


- Select Overlay map to see all the chart files you have.

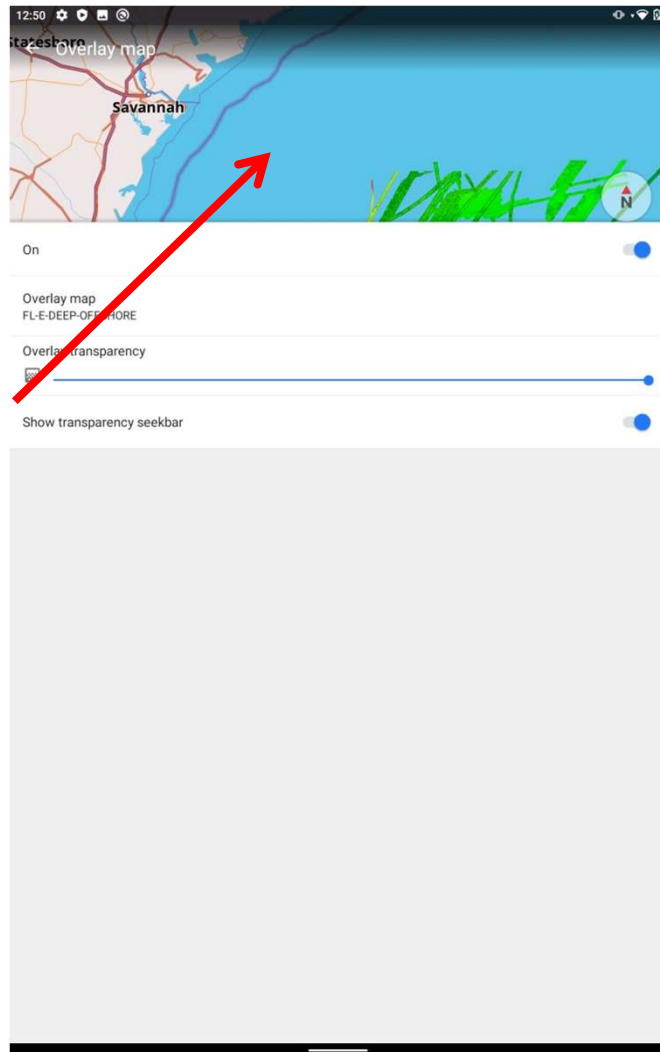
- Select the chart file from the list in order to view it.



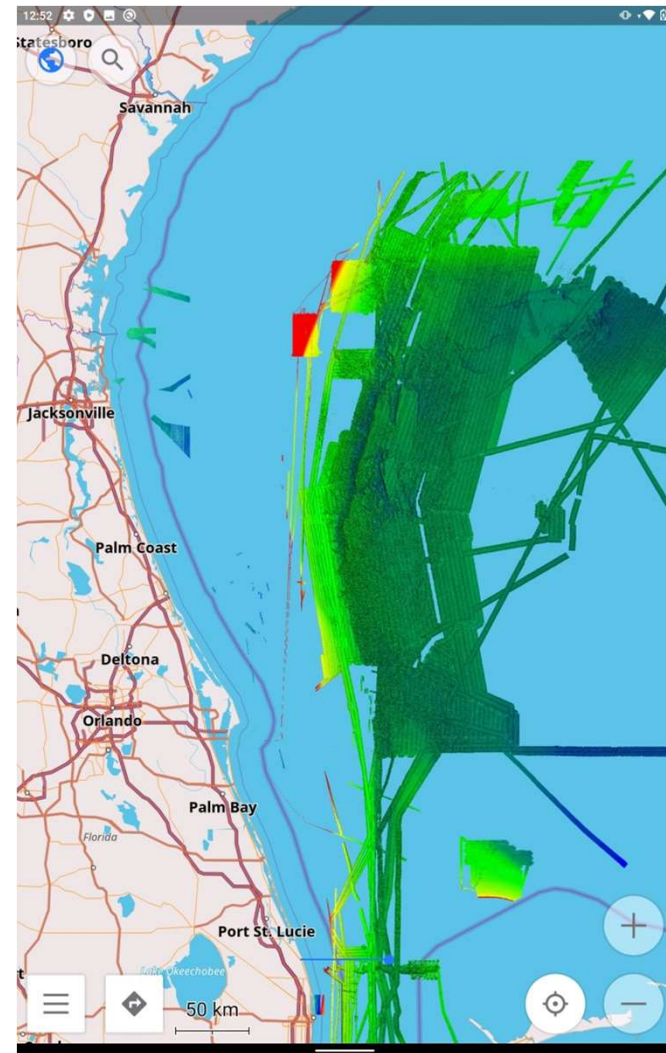
- Be sure the transparency slider is all the way to the right.



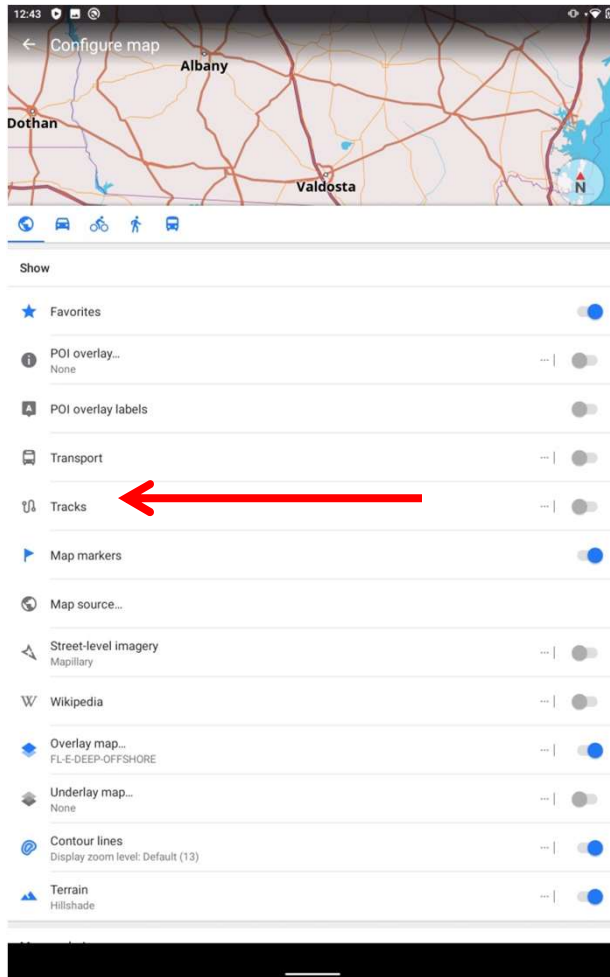
- Click anywhere in the map space to exit the menu and view the chart.



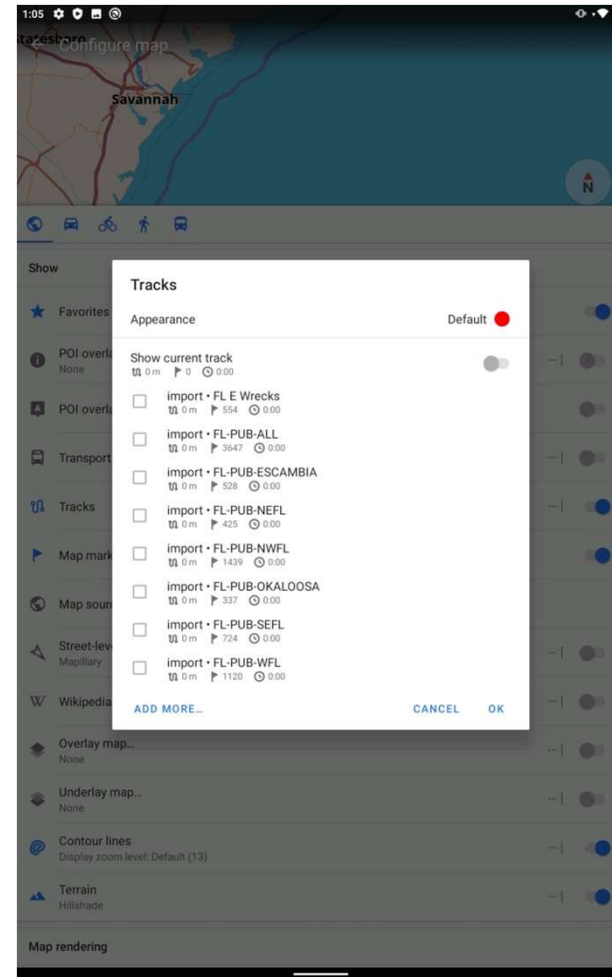
- Repeat those steps to view each chart file.



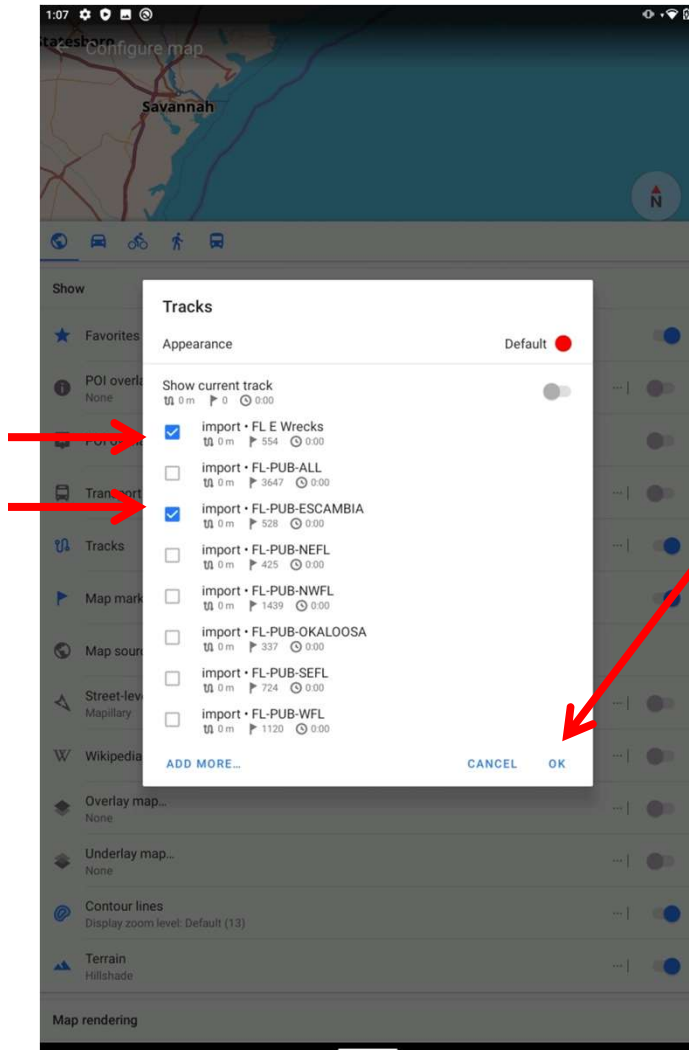
- If you have a **waypoints** or a **wreck** chart, you can access those on the Configure map menu and selecting Tracks.



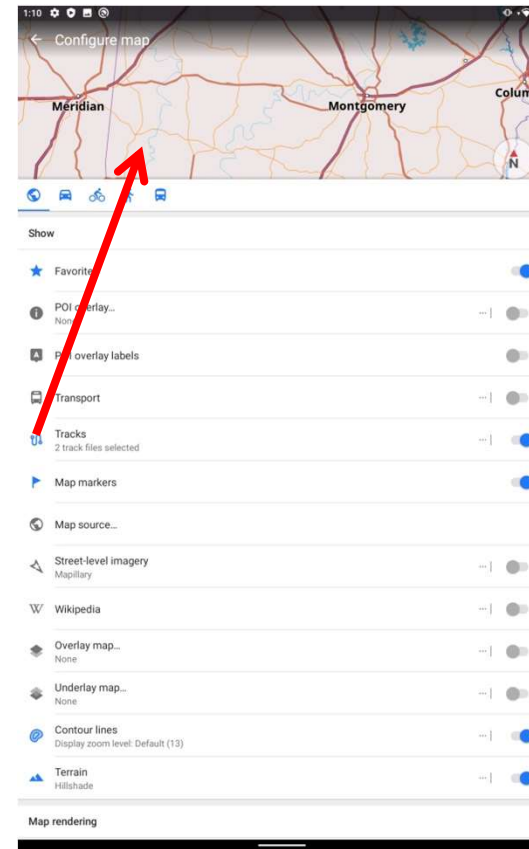
- The waypoints and wrecks chart(s) you have purchased will be visible here.



- You can turn on and off the charts you want to view by clicking on the squares next to the file names

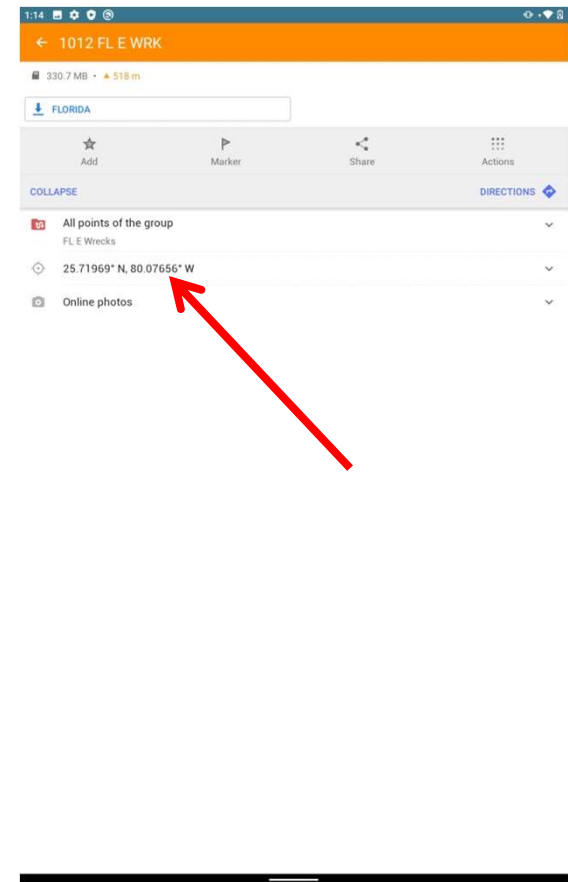
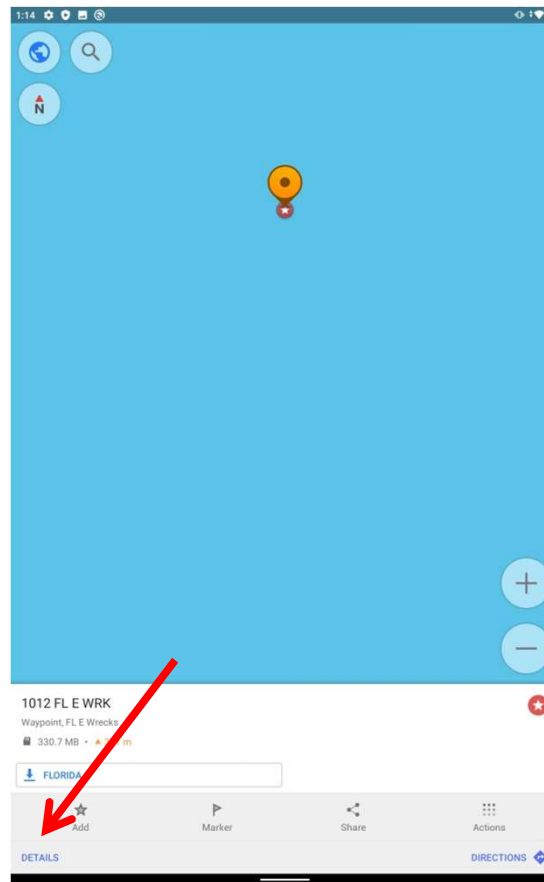


- When a square is blue, the waypoints will be visible on the map.
- After you turn on the files you want, press OK. Then click anywhere in the map space to view the chart.



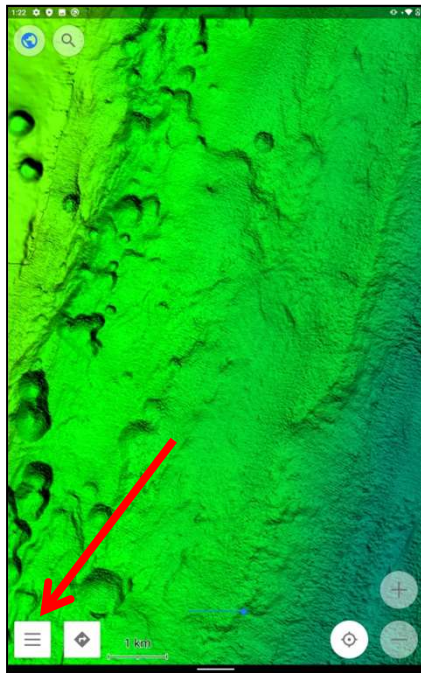
- The waypoints will appear as dots on the map.
- You can select one by clicking on it.

- Clicking on a point will show you its name.
- Click Details to see the coordinates of the point.

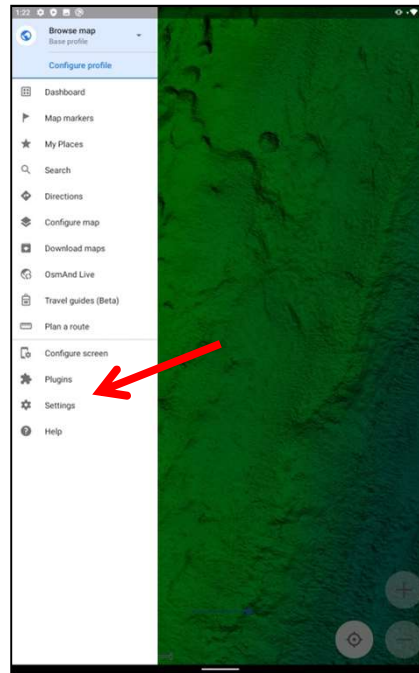


Other useful features of OSMand

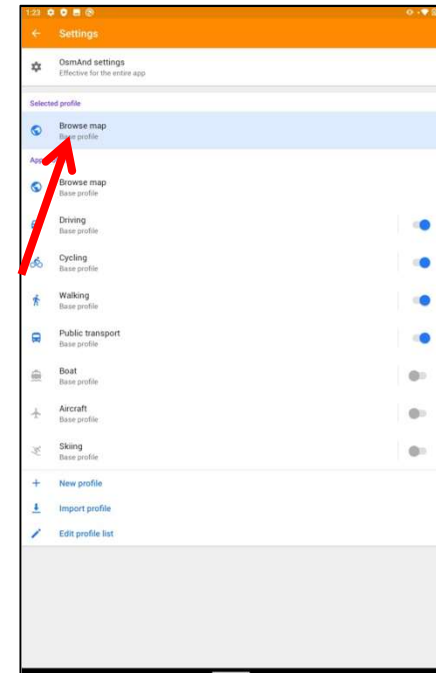
- Create Waypoints:
 - You can create waypoints on a 3D chart by long pressing on a certain spot. You can see the coordinates for it by clicking Details.
- Coordinate Format:
 - You can change the coordinate format to match that of a chartplotter or GPS you're using.
 - Follow the steps on page 11 to change the coordinate format.



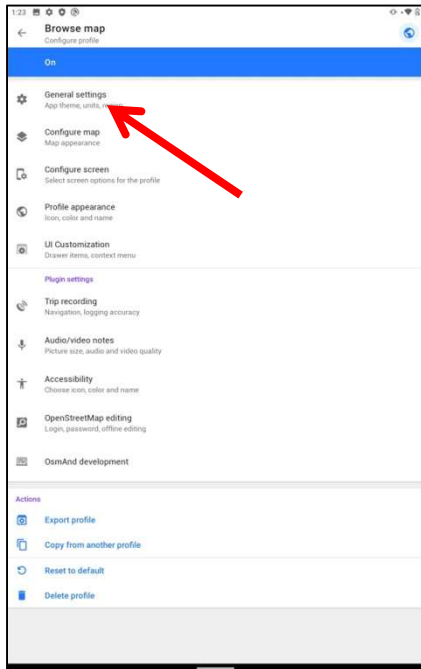
1



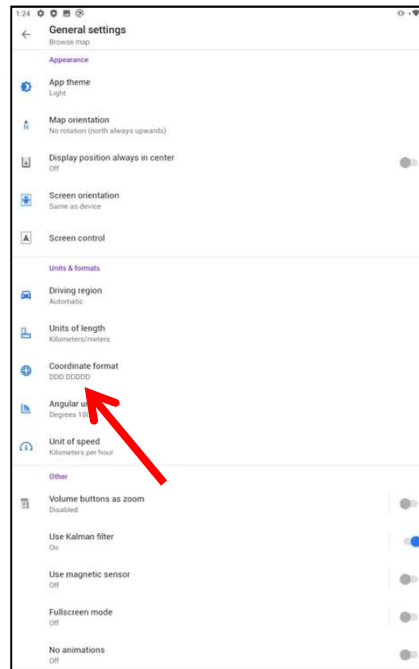
2



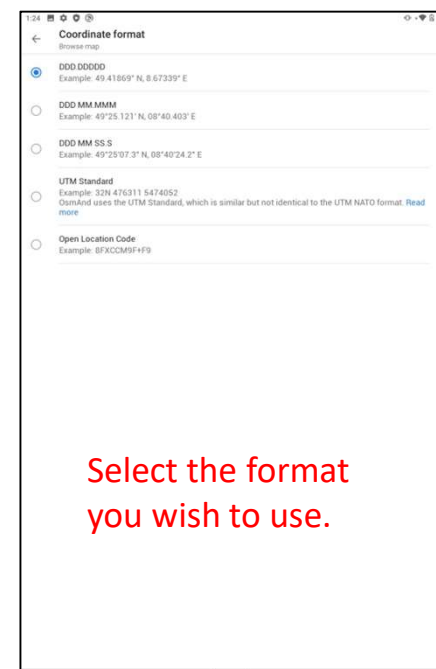
3



4



5



11

If you run into any issues, have any questions, or have any feedback, please contact us at info@strikelines.com or call us at 850-710-0242.

Tight lines!
The StrikeLines Team

StrikeLines.com
34 Audusson Ave
Pensacola, FL 32507
850.710.0242
info@strikelines.com