

STRIKELINES.com

Custom Fishing Charts

"I've often wondered why we could send a rover to the moon, but couldn't get something like this on a bottom machine. You are on the right track my friend..."

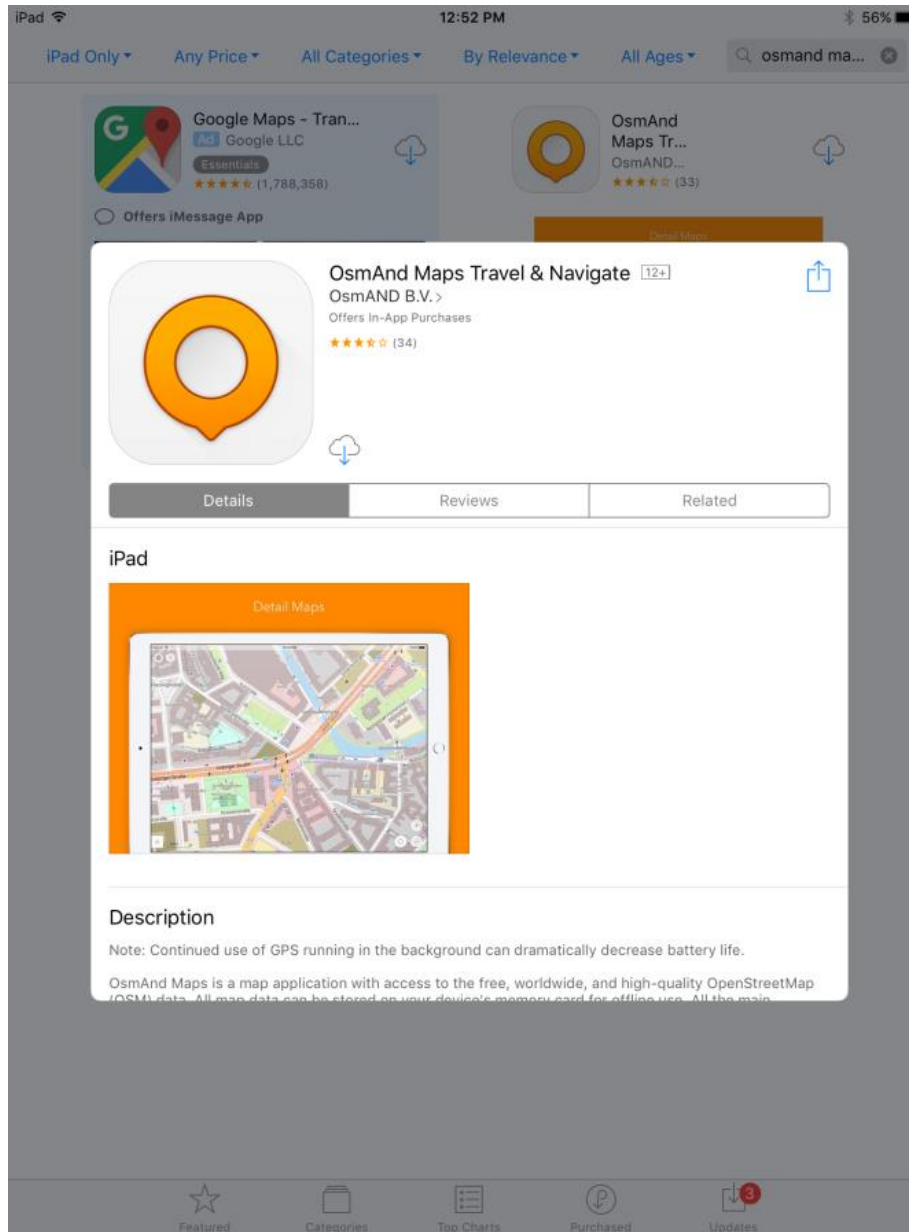
--Robert Stuart

Gulf Coast fisherman

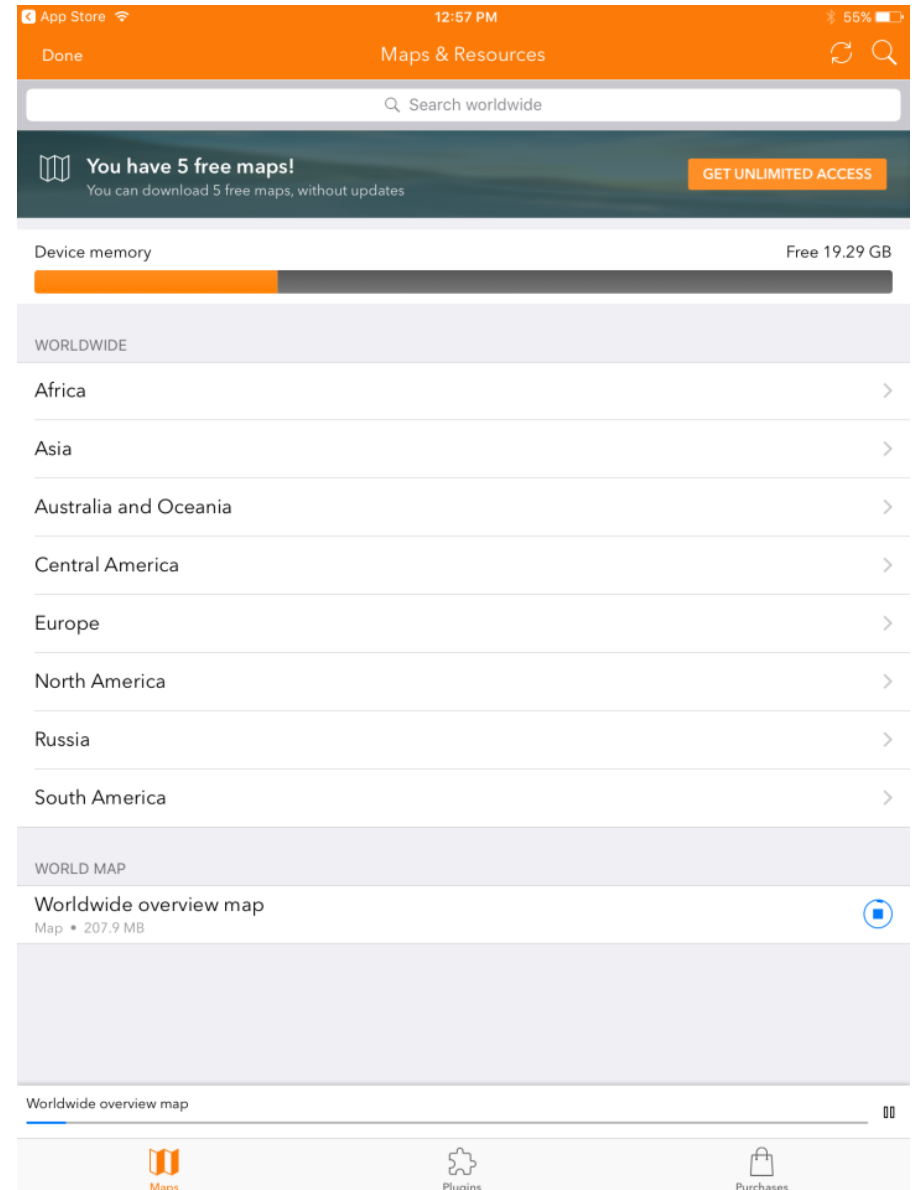
Thank you for your purchase of a StrikeLines 3D chart for iOS. The chart is a product of hundreds and hundreds of hours tracking down and processing the best raw multi-beam sonar data from tens of different sources. Using advanced processing software normally reserved for petroleum companies and government funded bathymetry surveys, we slowly synthesized it into a truly unique chart. We're proud of our 3D charts and hope you enjoy using this one as much as we enjoyed creating it.

StrikeLines.com
34 Audusson Ave
Pensacola, FL 32507
info@strikelines.com
850.710.0242

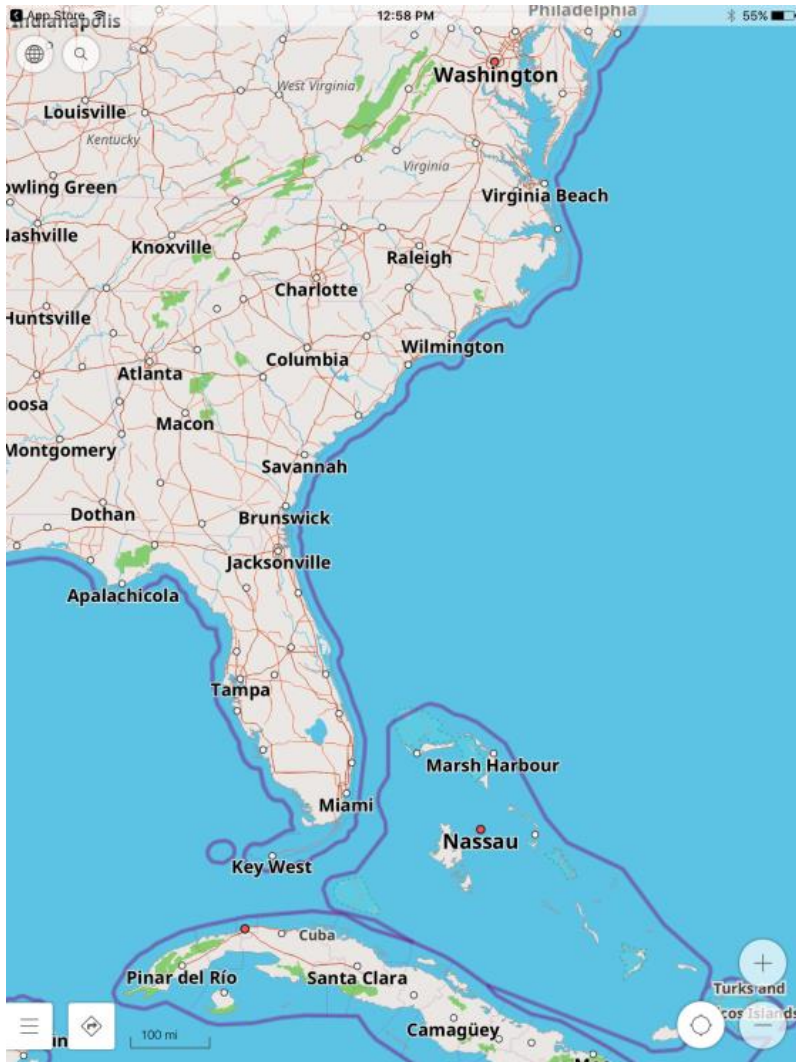
1. Download and install OsmAnd Maps Travel Navigate from the App Store.



2. Open OsmAnd and select a base map. We recommend the worldwide overview map or the map for your state.

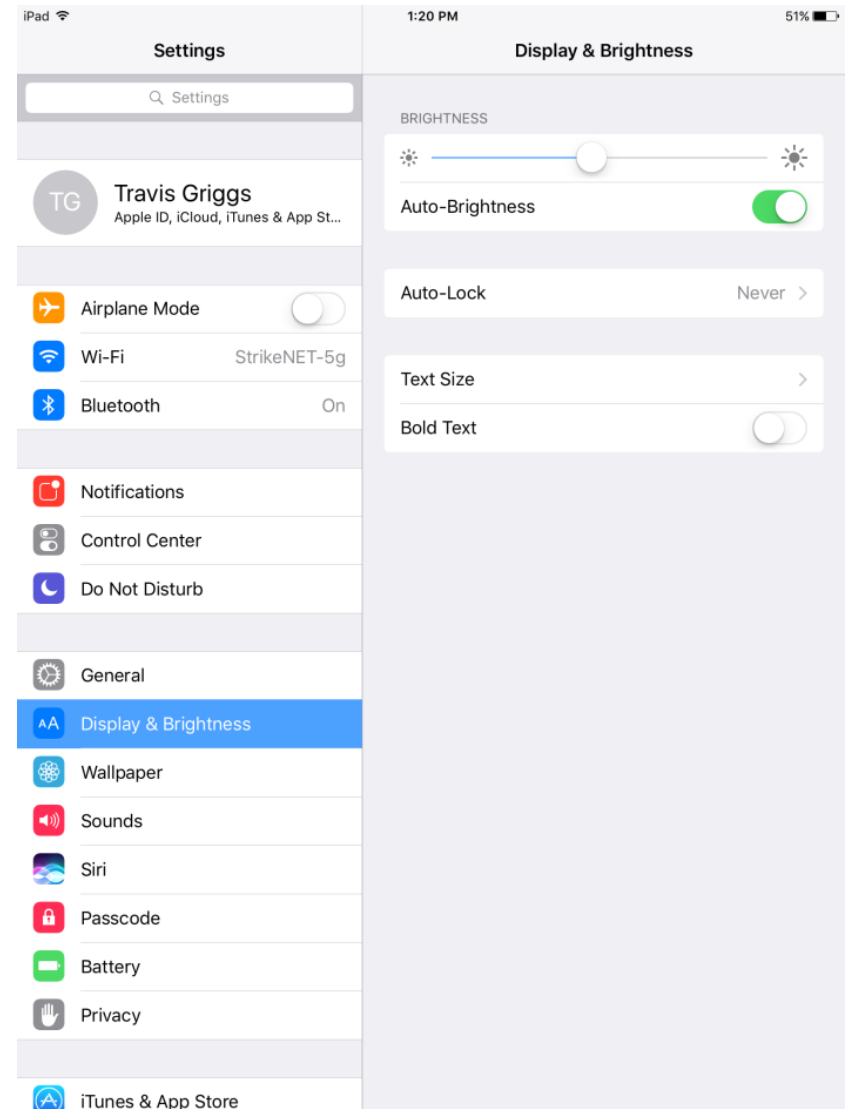


- After the base map is finished downloading, check the base map and pinch to zoom.

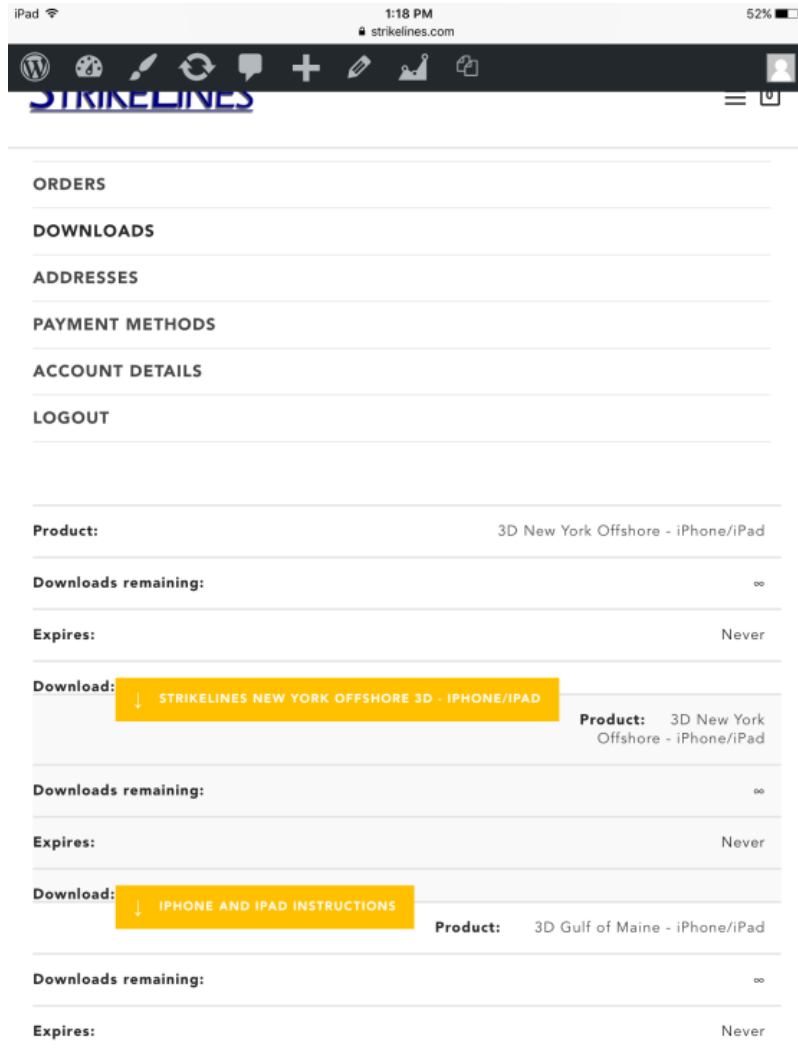


- Exit OsmAnd and power off your device. After the device is off, turn it back on.

- Go to your device settings, then Display & Brightness, and set Auto-Lock to never. If your device auto-locks while downloading the chart file, the download will fail. Downloads can take an hour or more depending on your internet speed.



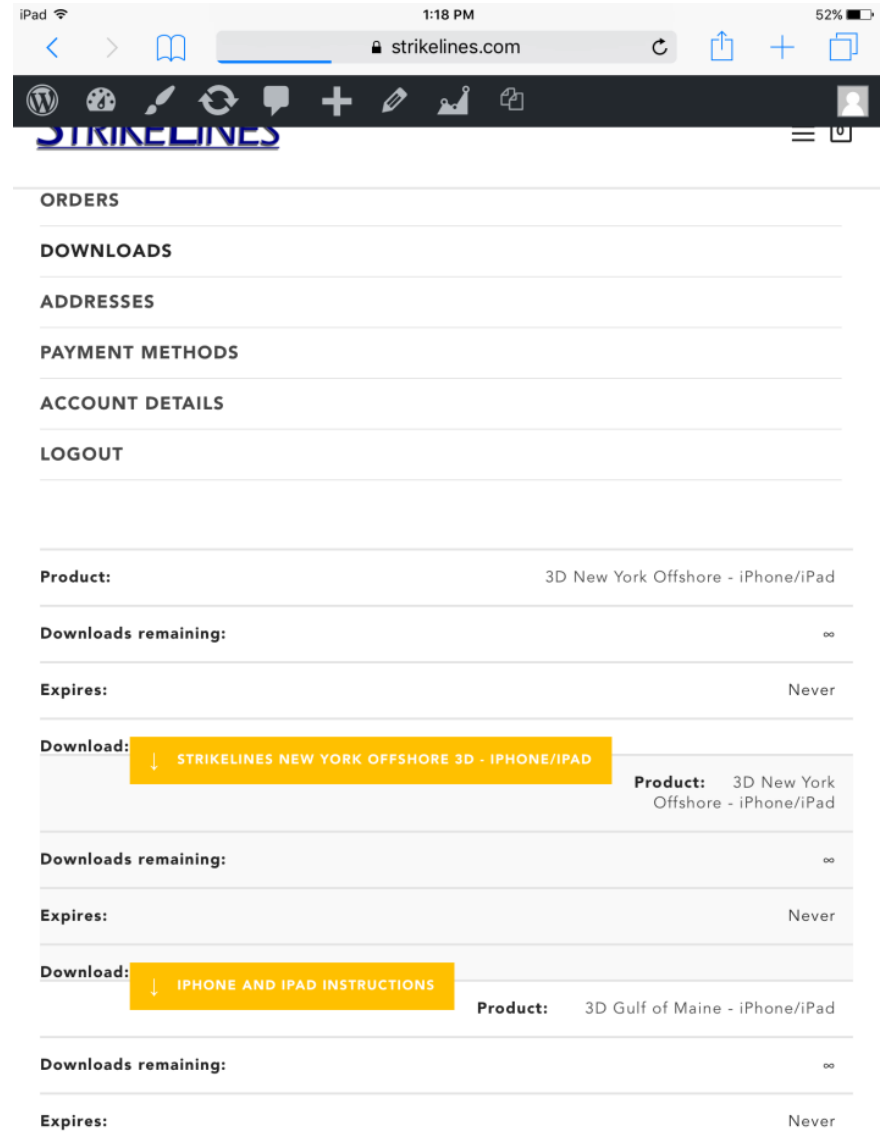
6. Go to StrikeLines.com and login to your account.
7. Go to Downloads.



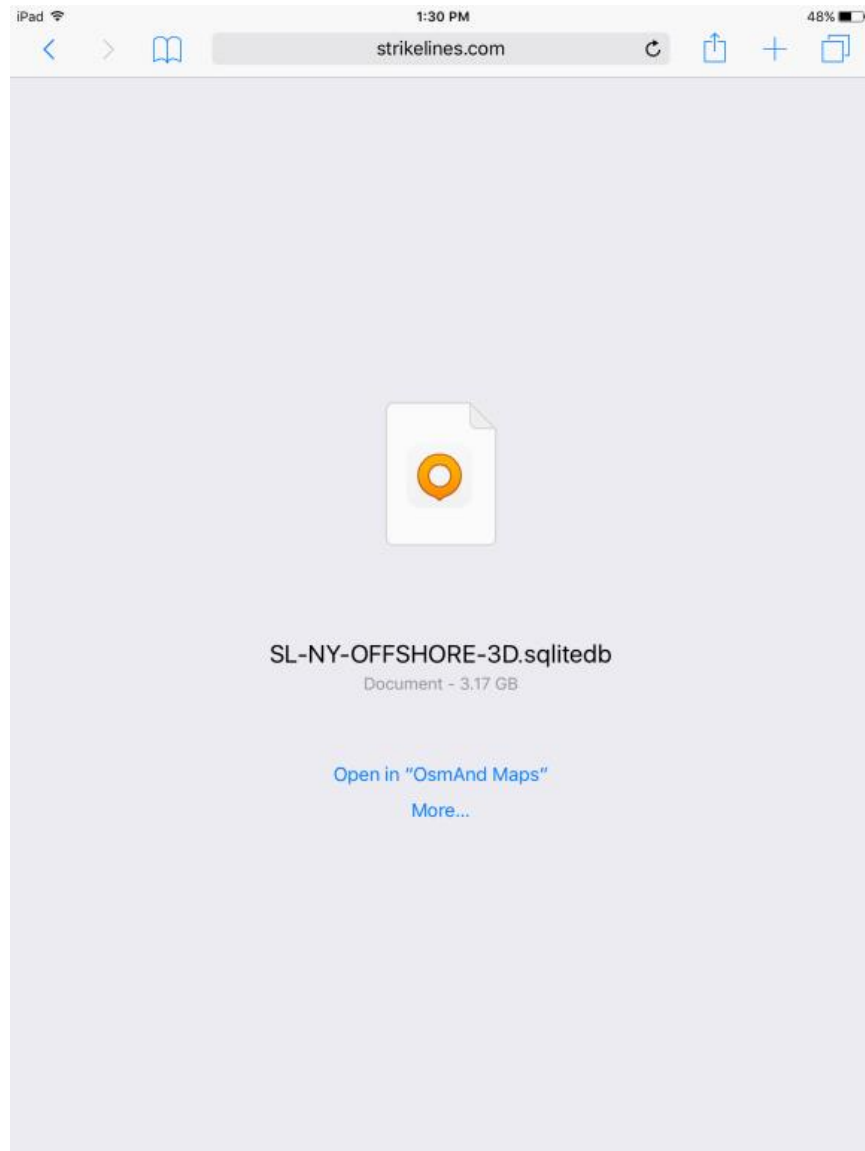
8. Click the yellow button to download the appropriate chart file. **A small blue bar will appear at the top of the window in the address bar.**

iOS OsmAnd Instructions

Nothing else will happen and the bar will not move for several minutes or more. As long as the blue bar is still there the file is downloading. If you navigate away from the page the download will fail.

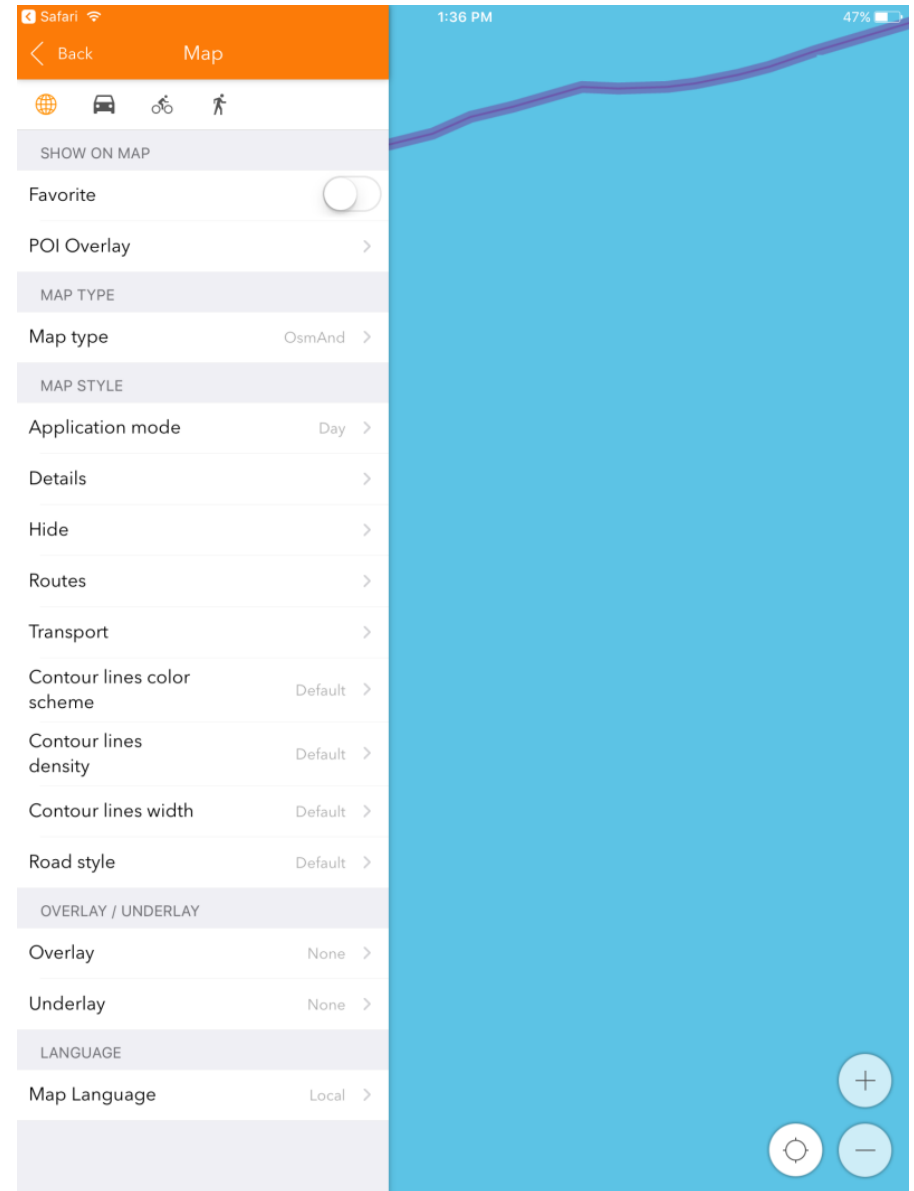


9. When the file is finished downloading you will see a screen giving you the option to open the file in OsmAnd Maps. Click to do so.

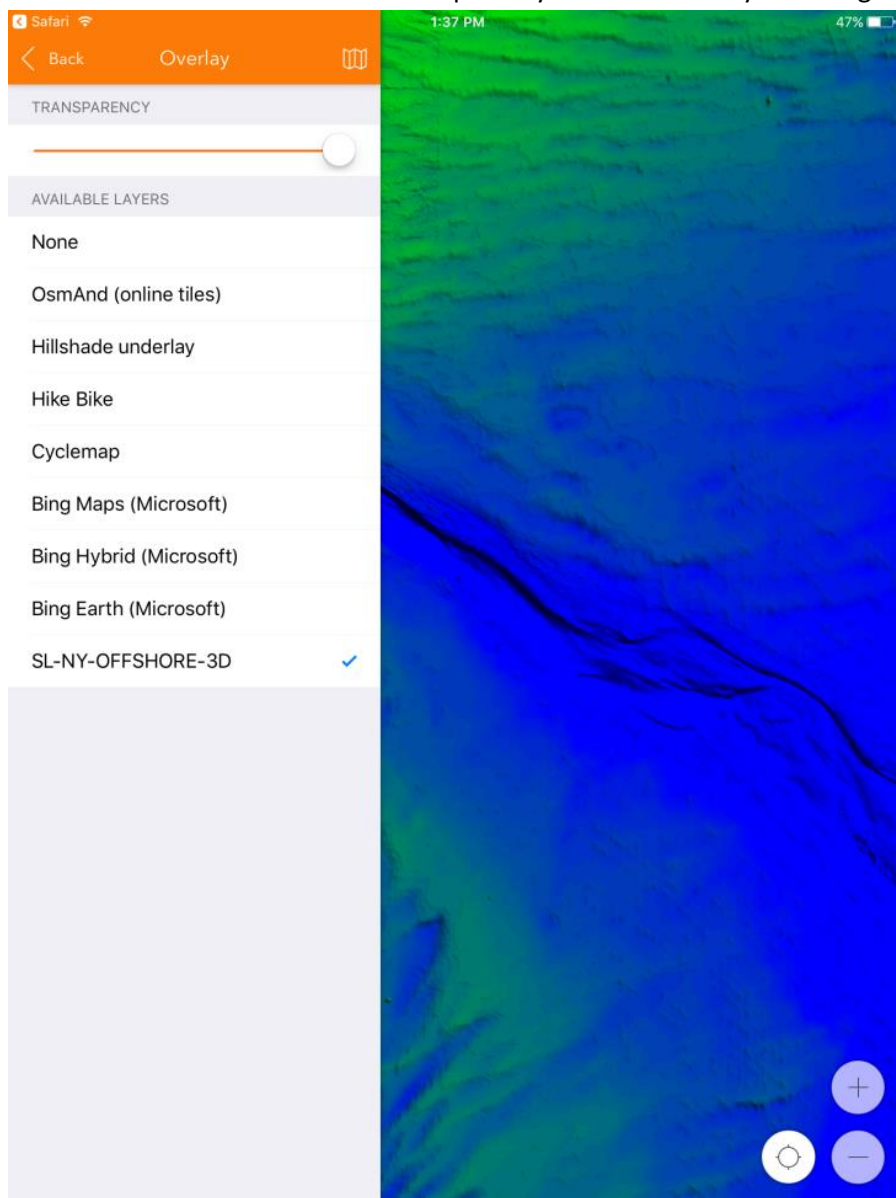


10. You will receive a notification in OsmAnd that the file has been loaded.

11. Click the small globe icon in the upper left of OsmAnd. Select the Overlay option.

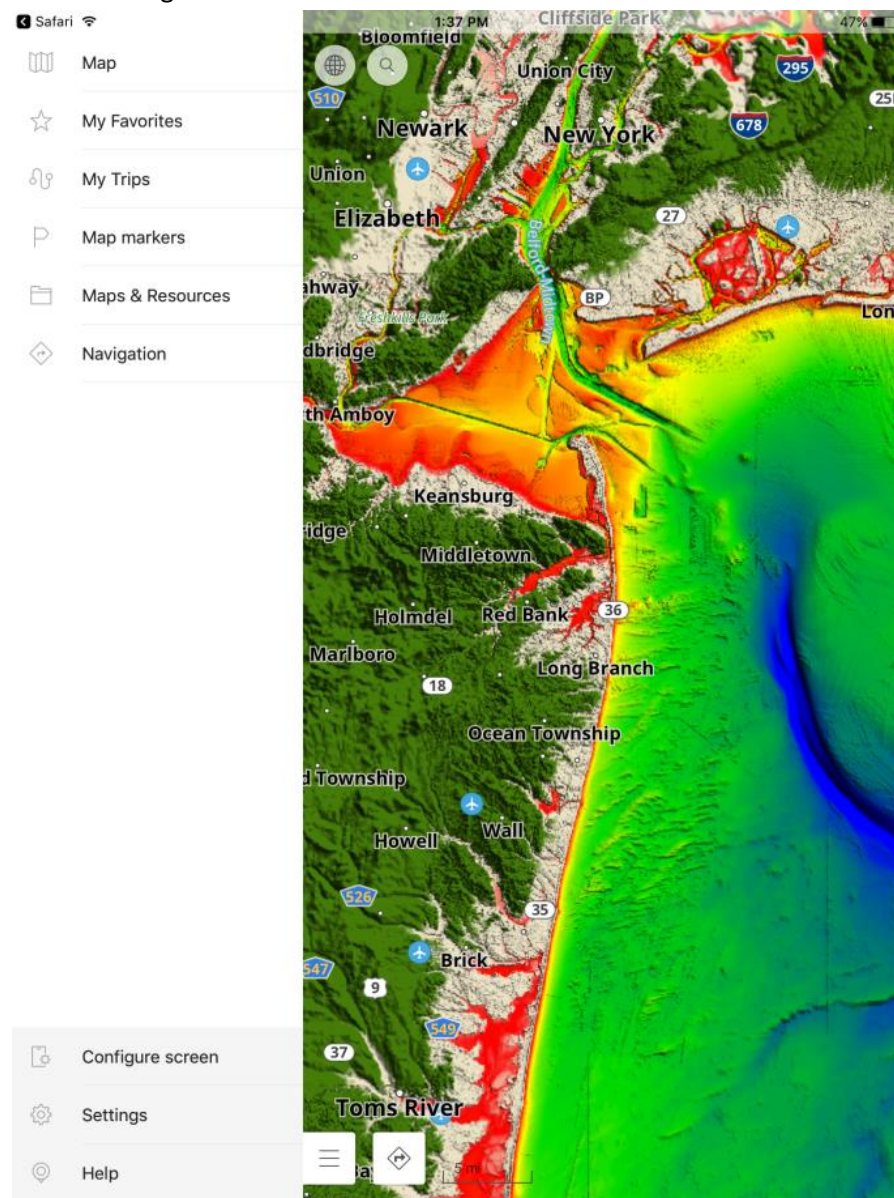


12. Choose the StrikeLines chart you downloaded. In this example SL-NY-OFFSHORE-3D and slide the transparency slider all the way to the right.

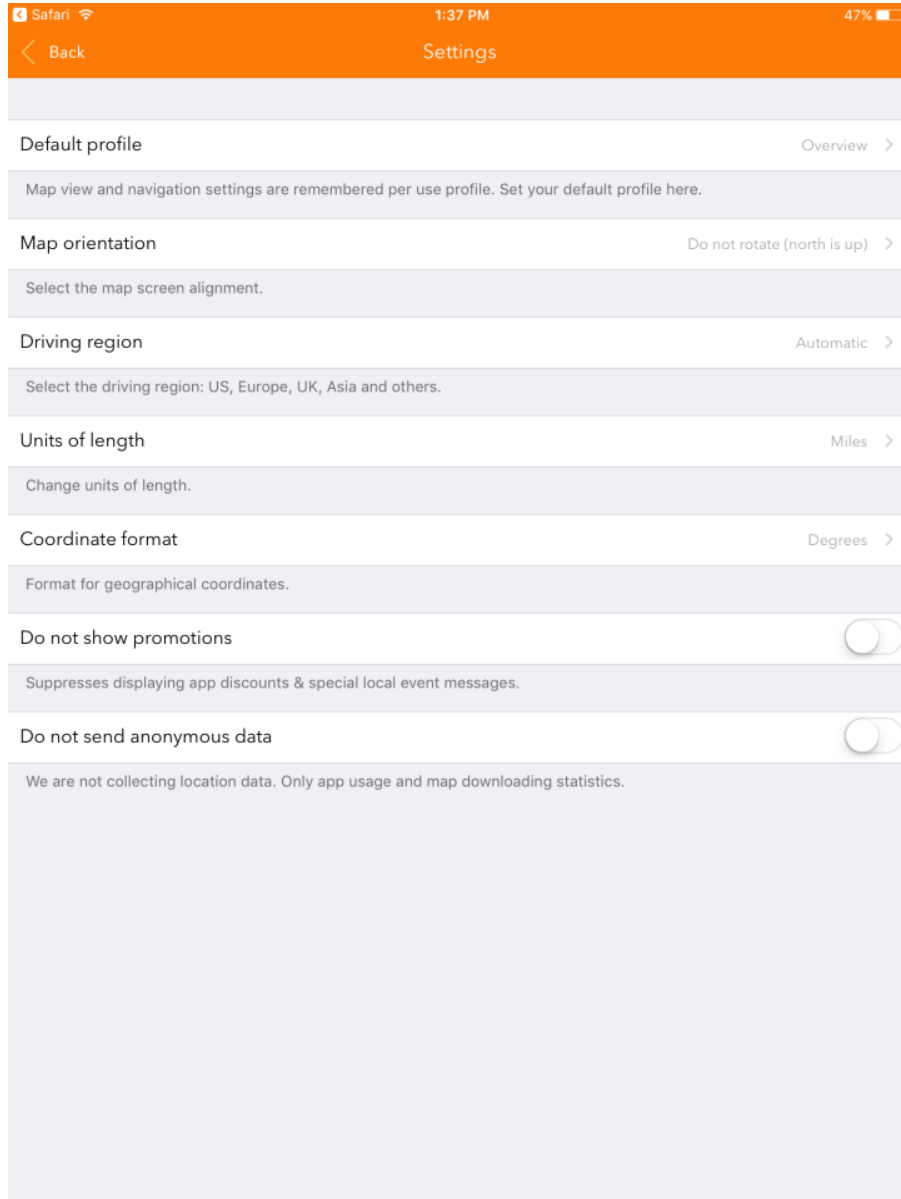


13. Click Back and return to the main map.

14. Click the three horizontal bars icon on the bottom left of the screen. Select Settings at the bottom of the menu.

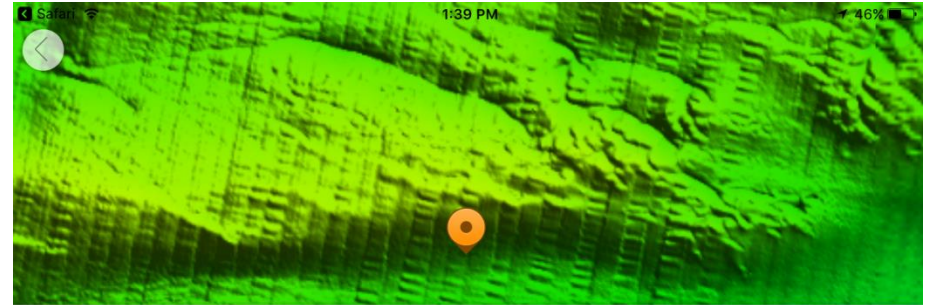
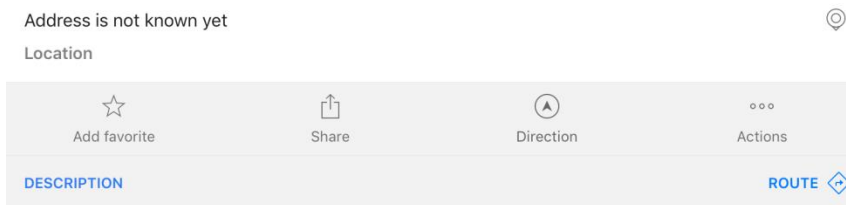
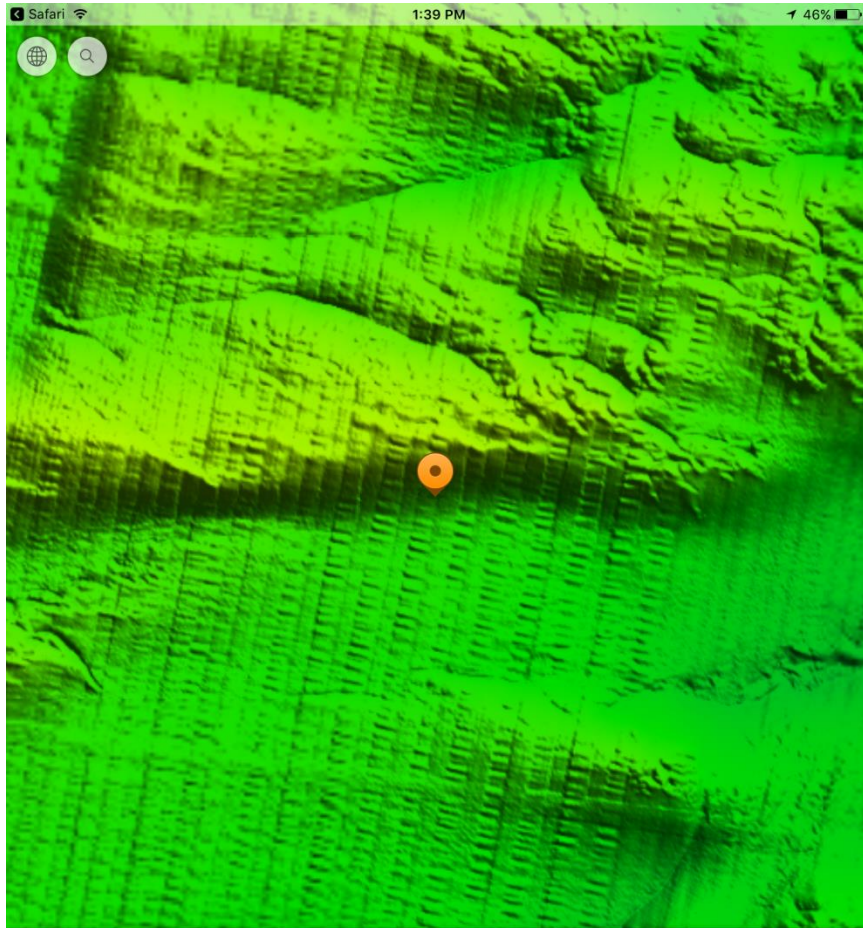


15. In Settings, select General Settings. Then select Coordinate Format and change the format to whichever you prefer (normal is Degrees and Minutes).



16. Return to the map screen.
17. Click the small circle or target icon on the bottom right of the screen next to the zoom buttons. This enables the GPS. Select Allow when iOS asks if OsmAnd can access location settings.
18. Don't forget to return your Auto-Lock to the appropriate time period by going to your iOS settings, Display and Brightness, then Auto-Lock.
19. Enjoy!

To create a waypoint or pull coordinates for a spot, long press on the map where you want the waypoint or coordinates. If you want to save it, click add to favorites. If you want the coordinates for the spot, click Description in blue in the bottom left.



Address is not known yet

Location



Add favorite



Share



Direction



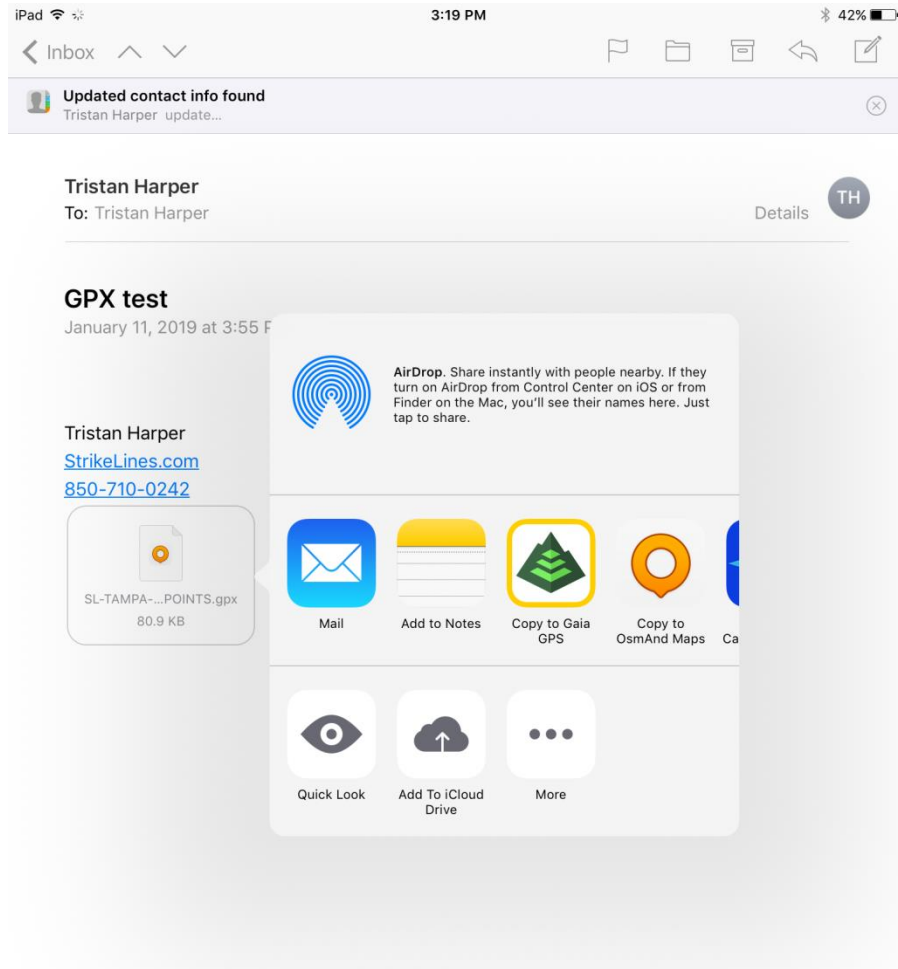
Actions

COLLAPSE

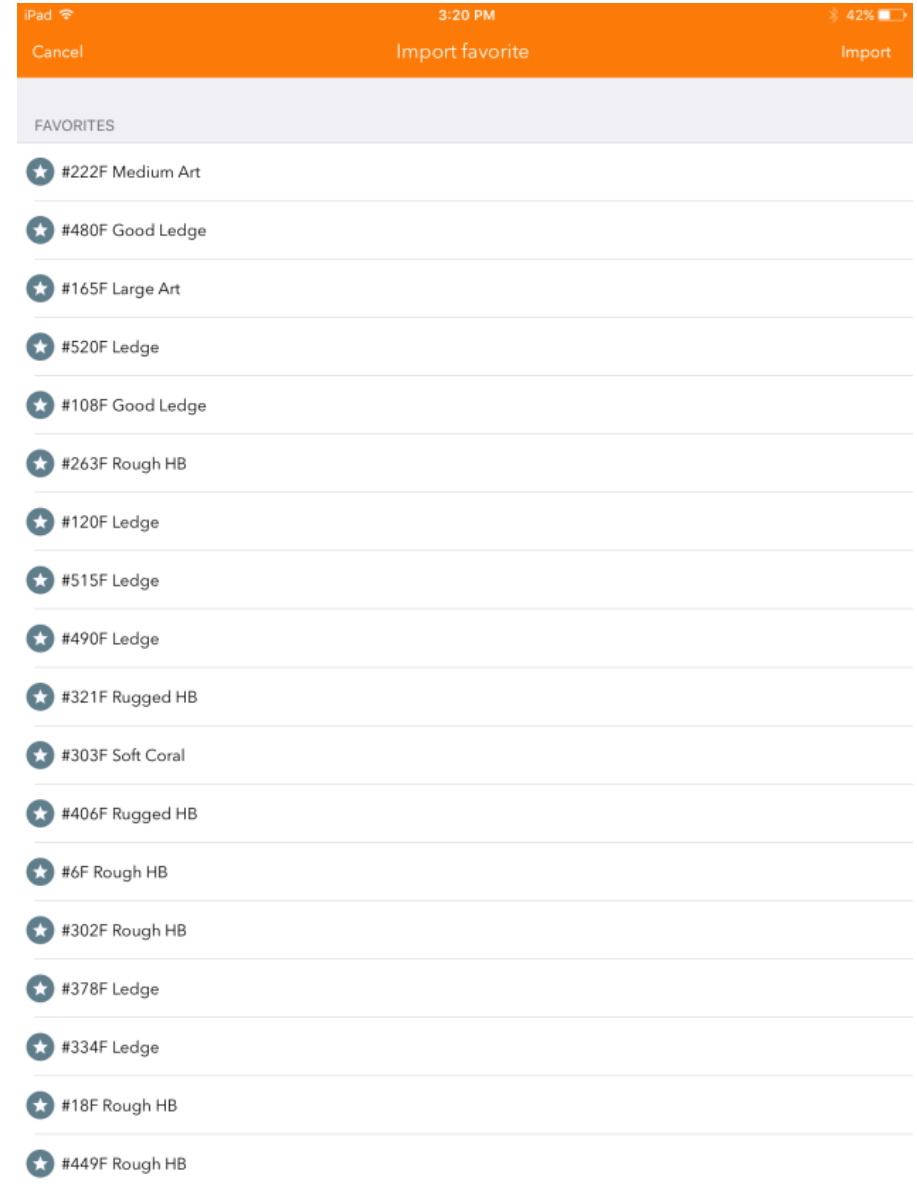
ROUTE

40° 6' 55.04144" N, -73° 59' 28.02835" W

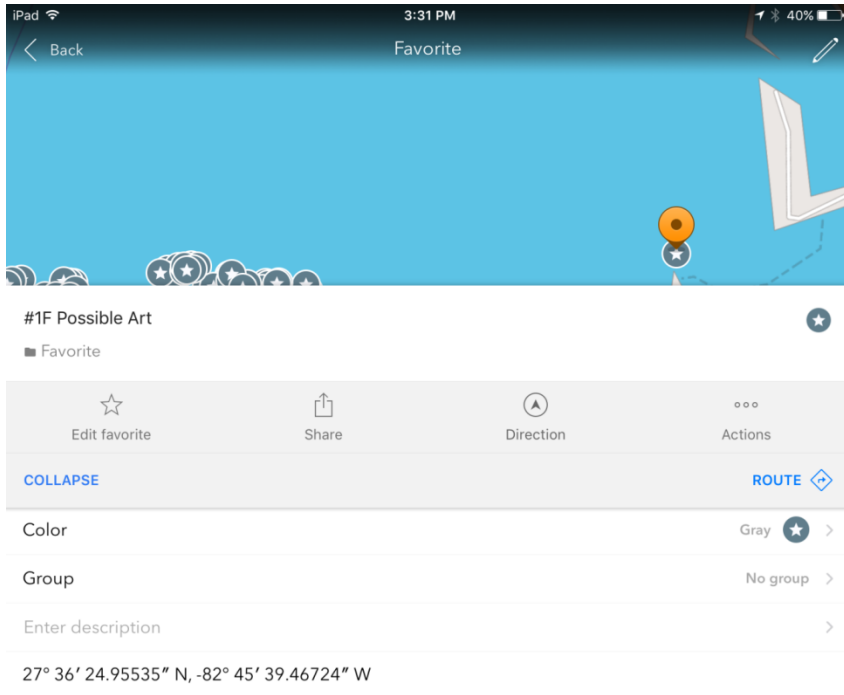
To import waypoints from a GPX file or a StrikeLines waypoint chart email the GPX file to yourself. Long press the attached GPX file. Choose to open with OsmAnd.



In OsmAnd, choose to import the data as Favorite. OsmAnd will show a list of the waypoints to be imported. Click Import in the upper right corner.



To edit a waypoint, press the waypoint then click Description in the bottom left. From the Description screen you can pull the coordinates, change the icon for the waypoint, add or change the waypoint's group, and even enter a description. Note that the waypoint must be marked as a favorite to get these options.



If you have any questions or run into any problems, please call or email.
We're here to help!

StrikeLines.com
34 Audusson Ave
Pensacola, FL 32507
850.710.0242
info@strikelines.com